

# LHM-P – HDMI Active Optical Cable

## Overview

LUSEM's LHM-P is Plug & Play HDMI Active Optical Cable(AOC) well suited for critical and versatile AV installations that demand flawless HDMI Signal integrity and it provides unmatched signal fidelity and transparency over a wide range of input resolution up to 100m long run which is much beyond the normal reach of conventional copper cables in distributing HDMI.

LUSEM OxLinx HDMI AOC holds firmly distinctive performance advantages. It is thinner, lighter and more flexible than copper or even standard optical cables while providing transparent and widely compatible HDMI essential control features like HPD, EDID, HDCP and CEC link operations. And the cable jackets comply with international flame retardant requirements and provide customers with options on CMP-OF UL Plenum and Low Smoke Zero Halogen cable jacket. With LUSEM OxLinx AOC, user experiences are extremely maximized with its integrator-oriented features along with existing latest advances in HDMI technology including 3D, 4K UHD resolution and deep colors from an HDMI-D or DVI-D interfaces. OxLinx's removable HDMI-A end solutions enable system integrators to pull the cables very effectively through small size of conduits in a number of onsite professional AV installation environments.



## Features

- Up to 4K 30Hz, 3D, Deep Color
- Multi-channel Audio, Dolby TrueHD, DTS-HD Master Audio
- HDMI 1.4 Compliant : EDID, CEC, HDCP
- EMI & RFI Immunity
- Plug & Play Operation
- Integrator-oriented removable HDMI-A ends for easy advanced wiring
- Interoperable field flexibility : HDMI-D with HDMI-A & HDMI-D with DVI-D single link
- Built-in Powering (No external 5V USB power port)
- High Pulling Strength & Compression Load
- Low Power Consumption
- Compliant with International Flame Retardant Standards: UL CMP-OF (Plenum), IEC LSZH (Low Smoke Zero Halogen)

## Applications

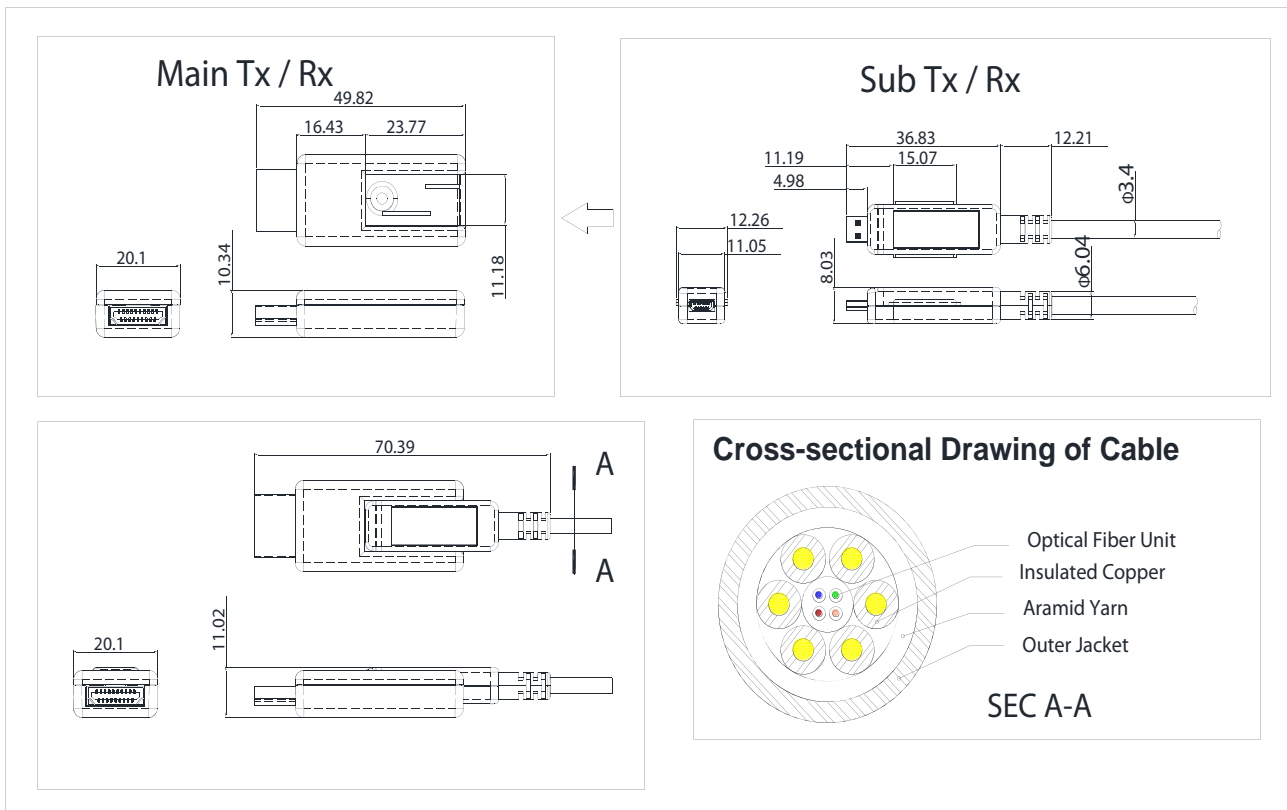
- Professional AV System Interconnection
- In & Outdoor Digital Signage Panels & Kiosks
- Home Theater Systems
- Facility Automation Systems

## Order information

Model	Length	Order number
LHM-PL10	10m	8686-0002-10
LHM-PL15	15m	8686-0002-15
LHM-PL20	20m	8686-0002-20
LHM-PL30	30m	8686-0002-30
LHM-PL40	40m	8686-0002-40
LHM-PL50	50m	8686-0002-50

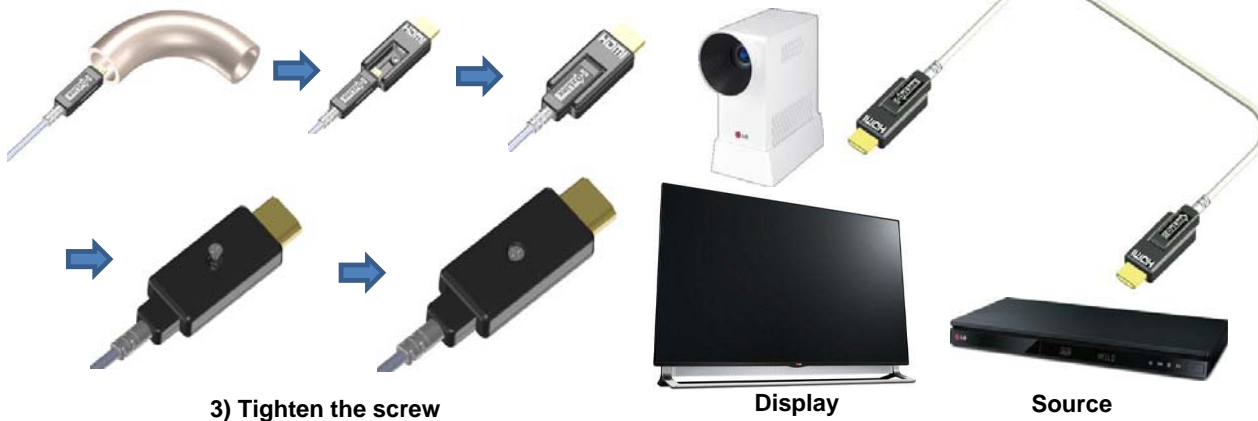
Model	Length	Order number
LHM-PL60	60m	8686-0002-60
LHM-PL70	70m	8686-0002-70
LHM-PL80	80m	8686-0002-80
LHM-PL90	90m	8686-0002-90
LHM-PLA0	100m	8686-0002-99

## ■ Product Dimensions Unit of Measure [mm]



## ■ Product Installation Diagram

- 1) Pulling through conduit    2) Connect HDMI-D with HDMI-A Adaptor



1. Insert HDMI-D cable assembly into the conduit.
2. Connect HDMI-D with HDMI-A adaptor.
3. Screw the HDMI-D as shown on 3).
4. Plug in Tx Connector labeled "SOURCE" to HDMI port of source device like PC or Bly-ray Player.
5. Plug in Rx Connector labeled "DISPLAY" to HDMI port of display device like a monitor or TV.
6. Follow the same process to connect other SOURCE and DISPLAY devices.