

ONERack

Rack it. Power it. Cool it.
Do it, with ONERack.

Universal mounting, powering and
cooling system for small devices



Patent Pending



ONERack™

Universal rack mounting system

Features

- ◆ Universal mounting for any brand
- ◆ Variable DC voltages from single power supply
- ◆ Reversible active fan cooling system for high density applications
- ◆ Available in 3 sizes; 4RU, 5RU, 6RU
- ◆ Power up to 32 devices in 4RU, 64 devices in 5 or 6RU
- ◆ Each slot can provide 2 different voltages at the same time
- ◆ Each slot has 7 different voltage settings
- ◆ Pass thru allows for custom powering options
- ◆ Fast easy installation of small devices
- ◆ Simple, time saving serviceability

Overview

ONERack is a universal, powered mounting system that vastly improves rack installation of small devices. tvONE's patent pending design converts randomly sized, externally-powered devices from any manufacturer into slide-in modules that can be installed quickly and cleanly and serviced easily. Chassis are available in 4RU, 5RU and 6RU and can hold up to 16 modules with up to 2 power circuits each. When using the ONERack Power Supply, each power circuit, can provide selectable power @ 5v, 7.5v, 9v, 12v, 13.5v, 18v, & 24v up to 35 watts. A pass thru is also available for custom power sources. Each ONERack Chassis can include 1 or more Power Supplies for added power which can also feed additional chassis, providing a clean power solution for all mounted devices. For service, just slide out a failed device, no cable ties, no guessing. Close the front of your ONERack with a Fan cover and keep it all cool. Up to 32 devices in just 4RU, powered and cooled!

Cable management accessory

1RK-CBL-MGMT



Mount this adjustable cable management accessory to the rear of any ONERack chassis to provide a clean installation for all the cables in your ONERack.

Front locking keeps your devices tight and secure



Blank Cover Kit



Fan Cover Kit
Airflow: 225 CFM max, reversible and speed adjustable - 100% down to 50%



Plexi Cover Kit

Blank Cover Kit

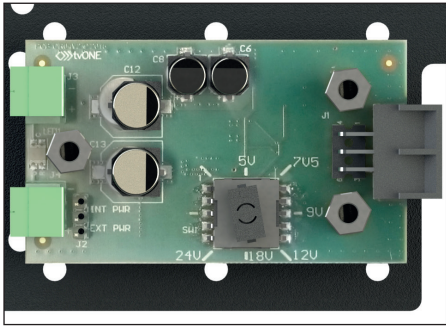
1RK-4RU-CVR-BLK A Blank cover for your ONERack Chassis
1RK-5RU-CVR-BLK
1RK-6RU-CVR-BLK

Fan Cover Kit

1RK-4RU-FAN The ONERack Fan cover contains 1 fan cover & PSU cables
1RK-5RU-FAN
1RK-6RU-FAN

Plexi Cover

1RK-4RU-CVR-PLEXI A windowed covered option allows for visual checks without removing the cover.
1RK-5RU-CVR-PLEXI
1RK-6RU-CVR-PLEXI



◀ Power circuit with voltage selector for a choice of 7 different voltages. Includes a pass thru option for custom power voltages supplied by 3rd party manufacturers

BasicKit

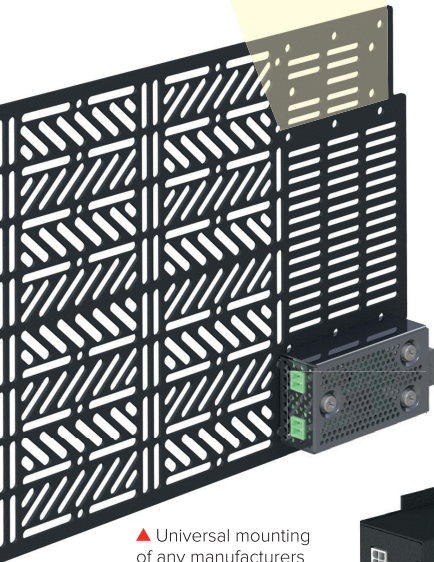
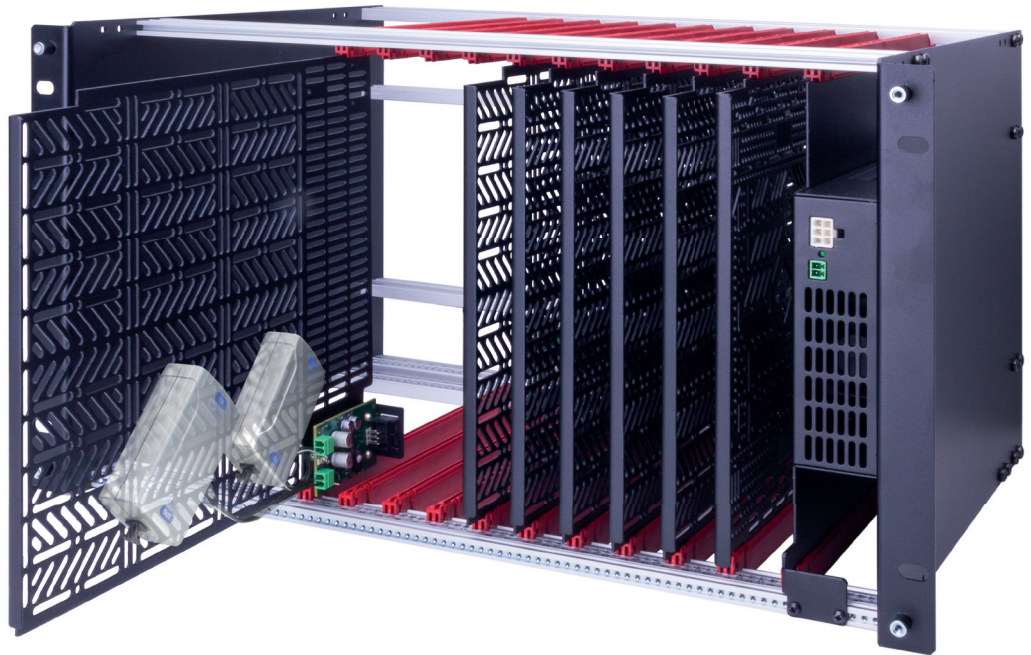
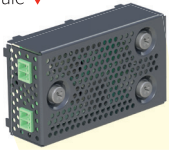
1RK-4RU-BASIC-KIT	The ONErack Basic Kit contains: 1 chassis & 6 modules.
1RK-5RU-BASIC-KIT	
1RK-6RU-BASIC-KIT	

Kit

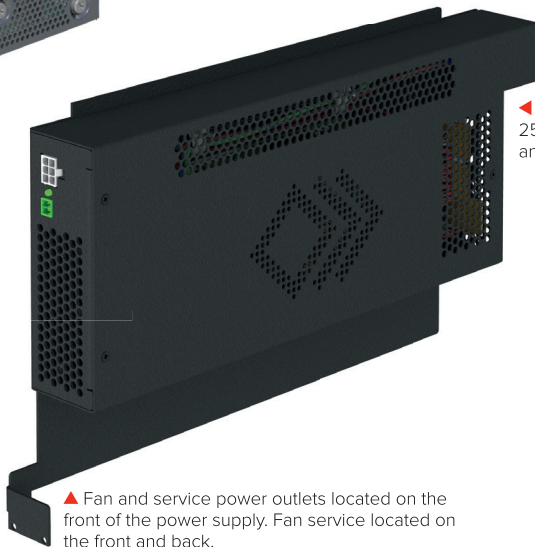
1RK-4RU-KIT	The ONErack Kit contains: 1 chassis, 6 modules and a 250w Power Supply.
1RK-5RU-KIT	
1RK-6RU-KIT	

▼ Chassis comes in 3 different sizes 4RU, 5RU & 6RU

Provide additional connection points on module ▼



▲ Universal mounting of any manufacturers device



◀ Power Supply Kit 250w max. Position anywhere within chassis

▲ Fan and service power outlets located on the front of the power supply. Fan service located on the front and back.

Power Supply Kit

1RK-4RU-PSU	The ONErack power supply kit contains a 250w power supply, chassis mounting accessories, and PSU cables
1RK-5RU-PSU	
1RK-6RU-PSU	



▲ Daisy chaining power eliminate external power supplies and cleans up your racks. Each slot can be set at a different voltage

Dual Redundant, Hot Swappable PSU

1RK-4RU-PSU-2-HSWP
1RK-5RU-PSU-2-HSWP
1RK-6RU-PSU-2-HSWP

◀ Eliminate that single point of failure with the all new ONErack Dual Redundant and Hot Swappable Power supply. Slides into any sized chassis and provides a front of rack load meter as well as fault indicators for both of the load sharing power supplies. In addition to a Front of rack service port this new Power supply also provides resettable fuses, DC power conditioning and surge protection for all of your small, sensitive gear!

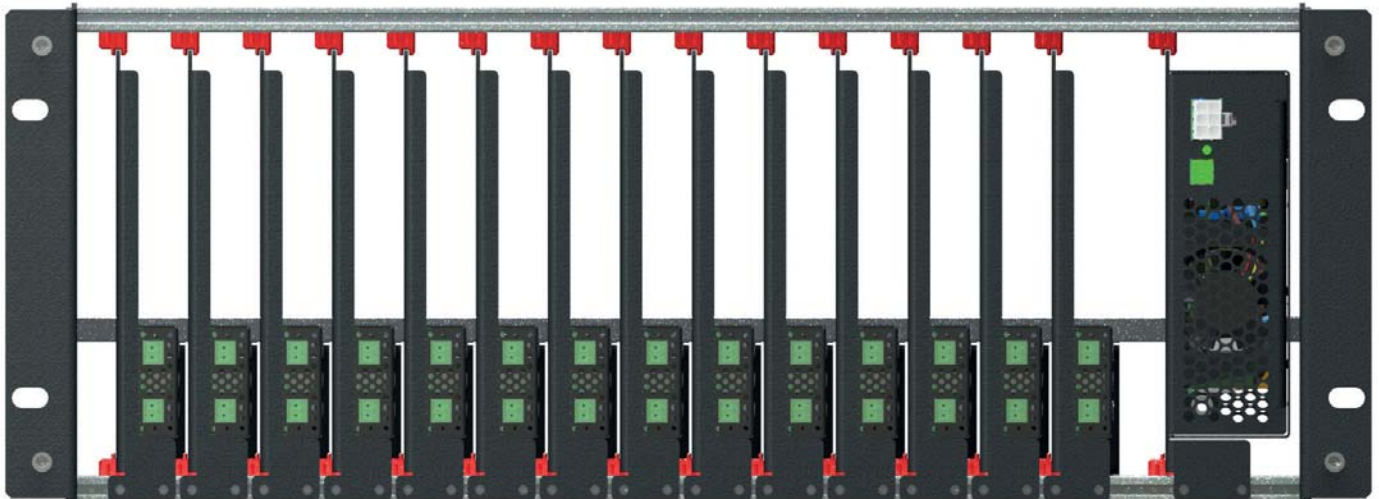


Specifications

Chassis	
Size L+W+D	4RU 14" x 7" x 19" (355mm x 177mm x 483mm) 5RU 14" x 8.7" x 19" (355mm x 221mm x 483mm) 6RU 14" x 10.43" x 19" (355mm x 265mm x 483mm)
Weight (empty)	4RU 6.3lbs (2.88kg), 5RU 7.5lbs (3.38kg), 6RU 8.6lbs (3.88kg)
Module kit weight	4RU 0.98lbs (0.44kg), 5RU 1.15lbs (0.52kg), 6RU 1.33lbs (0.6kg)
Area per slot**	4RU 58.9"² (380cm²), 5RU 79.05"² (510cm²), 6RU 99.2"² (640cm²)
Power per dock	max 35w
Power per slot	max 70w (requires optional 2nd power dock)
DC Voltages per slot	5v, 7.5v, 9v, 12v, 13.5v, 18v, 24v & Pass Thru
Pass Thru max	28v DC
Certifications	RoHS, CE, UL, FCC Class A
Max modules	16 (with internal PSU; 14)
Fan Cover, reversible	
Airflow	225 CFM max
Consumption	6W max
Speed Adjustment	100% down to 50%
Power	12v DC
Certifications	RoHS, CE, UL, FCC Class A

PSU	
Size L+W+D	4RU 12.6" x 5.67" x 1.74" (318mm x 144mm x 44mm) 5RU 12.6" x 7.41" x 1.74" (318mm x 188mm x 44mm) 6RU 12.6" x 9.14" x 1.74" (318mm x 232mm x 44mm)
Weight	4RU 3.3lbs (1.48kg), 5RU 3.9lbs (1.76kg), 6RU 4.5lbs (2.04kg)
Main Output voltage	28v DC
Main output power	250w
Fan output voltage	12v DC
Fan output power	11w
BTU	1195 BTU
Certifications	RoHS, CE, UL, FCC Class A
AC input Voltage	90-264v AC
Thermal	0° - 40° C
Outlets Available	2x 28v DC daisy chainable (rear) 2x fan 12v DC (1x front, 1x rear) 1x 28v DC service output (front)

** Additional Power circuit requires 26cm²
Specifications subject to change without notice
Patent Pending



4RU Front



4RU Rear

Ein Vertriebsprodukt von / Distributed by:

VIDELCO Europe Limited – Professionelle Audio-, Video-, Medien-Technik
Fon: +49 (0)2102 / 86 39-00 • Fax: +49 (0)2102 / 86 39-17 • info@videlco.eu • www.videlco.eu