

# 48-Port 10/100Mbps Fast Ethernet Switch



Perfectly designed for low cost, high performance, and easy installation, PLANET FNSW-4800, a 48-port 10/100Base-TX Fast Ethernet Switch, is your best choice of switched networks.

## *High-Density and Cost-effective Fast Ethernet Solution for SMB / Enterprise Network*

PLANET FNSW-4800 is a 48-port 10/100Mbps Fast Ethernet Switch with 19-inch 1U rack-mount size. It is ideal for businesses, the network edge, or workgroups within large organizations where an extra bandwidth is required. The FNSW-4800 is capable of providing non-blocking switch fabric and wire-speed throughput as high as 9.6Gbps to perform effective data traffic control for VoIP, video streaming and multicast applications in SMBs and enterprises, thus greatly simplifying the tasks of upgrading the LAN for catering to increasing bandwidth demands.

## *High Performance*

The high-performance throughput at filtering / forwarding rate is up to 14880 packets per second in 10Mbps, and 148800 packets per second in 100Mbps. Along with its dynamic shared memory buffer, the FNSW-4800 can boost bandwidth, eliminate unnecessary traffic and relieve congestion on your critical server path. The FNSW-4800 is the ideal option to alleviate bottlenecks in client / server and peer-to-peer environments in a cost effective way.

## *Plug and Play*

The FNSW-4800 provides a combination of 48 Fast Ethernet Switching ports that provide users with high-speed network connections. With its auto-negotiation capability, all the RJ-45/STP ports of the FNSW-4800 can be configured to speeds of 10/20Mbps or 100/200Mbps automatically. In addition, the product is equipped with the MDI/MDI-X auto detection for easy plug and play connection, regardless of cabling types – straight-through or crossover.

## Physical Port

- 48-Port 10/100Mbps Fast Ethernet Switch
- Supports Auto MDI/MDI-X function

## Layer 2 Features

- Complies with IEEE 802.3, 10Base-T, IEEE 802.3u 100Base-TX Ethernet standard
- Features Store-and-Forward mode with wire-speed filtering and forwarding rates
- Hardware based 10/100Mbps, half / full duplex mode, flow control, auto-negotiation
- Complies with IEEE 802.3x flow control for full duplex operation and backpressure for half duplex operation
- Integrated address look-up engine, supporting 16K absolute MAC addresses
- 9K Jumbo packet support
- IEEE 802.1Q VLAN packet transparency support
- Automatic address learning and address aging
- Supports CSMA/CD protocol

## Hardware Features

- 100~240V AC, 50~60Hz, 0.3A Universal power input
- FCC, CE Class A compliant



48 x 10/100Base-TX, RJ-45 Ports

**Fanless Design**

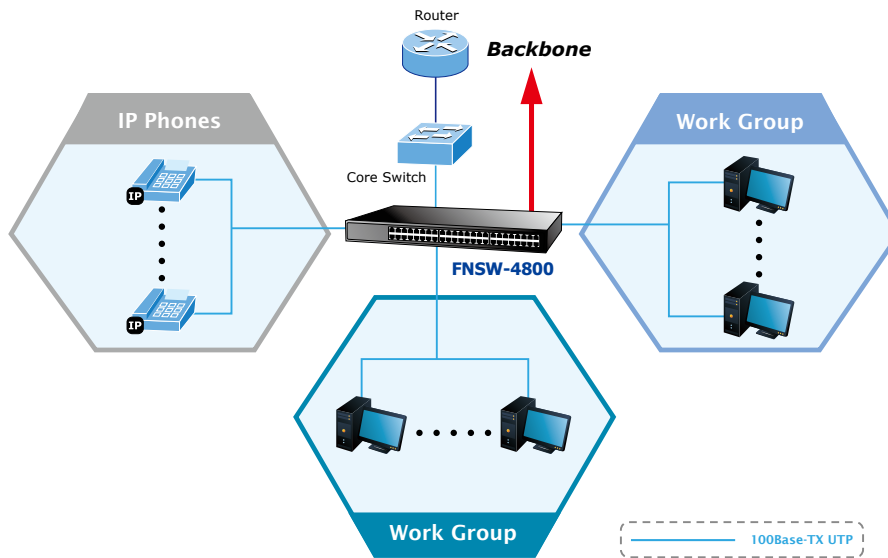
The FNSW-4800 successfully reduces substantial power consumption with the fanless and noiseless design collocating with the effective cooler. Therefore, the FNSW-4800 is able to operate stably and quietly in any environment without affecting its performance.



## Applications

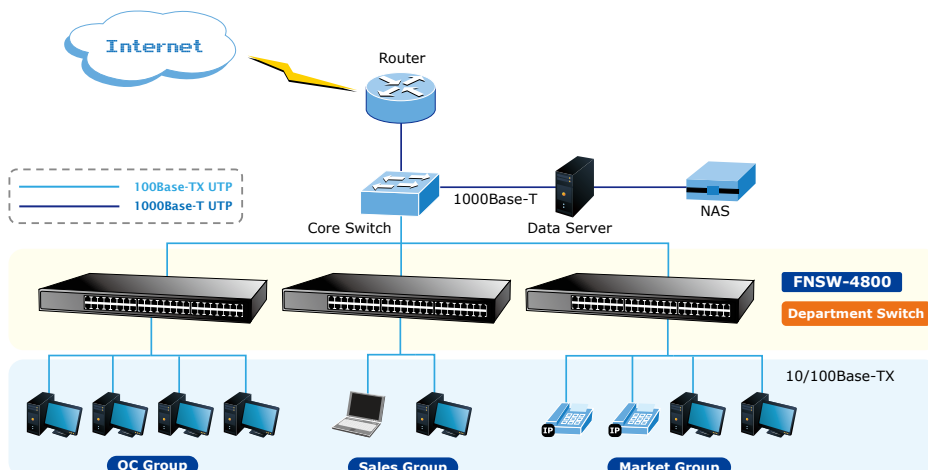
**Workgroup Switch**

With up to 9.6Gbps switching fabric, the FNSW-4800 can easily perform as the high bandwidth Fast Ethernet network backbone or your workgroup's backbone.



**Department Switch**

The FNSW-4800 can uplink directly using any straight or crossover cable to the backbone switch providing the connectivity to back plane yet segments the network traffic of the department to your backbone.



## Specifications

Model	FNSW-4800	
<b>Hardware Specifications</b>		
Hardware Version	3	
10/100Base-TX MDI/MDIX Ports	48	
Throughput (packet per second)	7.14Mpps	
Switch Fabric	9.6Gbps	
Power Requirements	100~240V AC, 50/60Hz, 0.3A	
Power Consumption / Dissipation	10 watts / 34 BTU	
Dimensions (W x D x H)	440 x 180 x 44 mm, 1U height	
Weight	2kg	
Switch Processing Scheme	Store-and-Forward	
Address Table	16K entries	
Packet Buffer	1056K bytes	
Jumbo Frame Size	9216 bytes	
IEEE 802.1Q VLAN Transparent	Supported	
Flow Control	Back pressure for half duplex, IEEE 802.3x Pause Frame for full duplex	
<b>Standard Conformance</b>		
Regulation Compliance	FCC Part 15 Class A, CE	
Standard Compliance	IEEE 802.3	Ethernet
	IEEE 802.3u	Fast Ethernet
	IEEE 802.3x	Flow Control
<b>Environment</b>		
Operating Environment	0 ~ 50 degrees C	
Storage Environment	-10 ~ 70 degrees C	
Operating Humidity	5 ~ 95%, relative humidity, non-condensing	
Storage Humidity	5 ~ 95%, relative humidity, non-condensing	

## Ordering Information

FNSW-4800	48-Port 10/100Mbps Fast Ethernet Switch
-----------	---