

## 16-CH Hybrid Digital Video Recorder



### Efficient Solution for Combining IP and Analog Cameras

PLANET HDVR-1630 is a hybrid DVR recorder which is able to record video and data from both traditional analog and network IP security cameras. The advantage of a hybrid DVR recorder is that it lets you use currently installed analog security equipment along with newer network IP technology. This enables you to upgrade your surveillance system to IP equipment at your own pace, according to your budget. The HDVR-1630 is the 16-channel embedded system with HDMI local display and features recording, live view, playback and backup functions, etc. With easy-to-remember DDNS feature, the HDVR can be placed either in LAN or WAN for easy installation. Besides, designed for various surveillance applications via RS485 interface, the HDVR is capable of controlling most types of protocols. For the purpose of general monitoring, the HDVR-1630 offers app viewer, Web browser and CMS (Central Management Software) for multi-platform remote access, thus making it an ideal solution for various applications, such as retail stores, communities, SMBs, supermarkets, restaurants and schools.



### Hardware

- Embedded, highly-reliable standalone HDVR
- Supports 16-ch BNC connectors
- Supports dual local display (VGA and HDMI)
- Supports 3.5" SATA x 1 HDD
- Supports RS485 for PTZ control

### Video / Audio

- Supports H.264 compressions
- Video resolution up to 1280 x 720
- Supports hybrid mode for combination of IP and analog cameras
- 2-way audio support with enhanced audio quality

### Video Recording / Backup

- Simultaneous recording and live video streams
- Manual or scheduled recording of 16 cameras simultaneously
- Video recycle function makes the video recording 24/7
- Exports recorded video file to AVI format to USB device
- Instant Event Notification and recording

### Network Service

- Easy access with PLANET Dynamic DNS and built-in NTP Server
- Supports PPPoE, DHCP and manual settings

### Easy Installation & Management

- ONVIF compliant for interoperability
- Supports multiple languages
- Auto discovered by management software
- Web-based and management utility for easy configuration
- Up to 256 channels with the central management software
- Supports two USB2.0 ports for mouse control and backup
- Supports mobile phone remote viewer, Web UI and CMS

*Hybrid Integration*

The HDVR-1630 allows each of its 16 channels to be connected to either an analog camera or an IP camera. If you already have analog cameras and want to add on a few IP cameras, the HDVR-1630 is definitely your ideal choice. In addition, the HDVR complies with ONVIF and it can expand flexibility between third-party IP cameras and the HDVR. The ONVIF is the main integration method for the HDVR and allows you to add cameras and reduce compatibility issue.

**Hybrid Integrated IP and Analog System**



*High Resolution Local Display*

The HDVR-1630 provides an **HDMI** and **VGA** video output interface for dual local display, which can be connected to HDMI monitor or VGA monitor for live view monitoring with video output of maximum 1280 x 720 resolutions. Due to local display, it can eliminate the need for a separate PC to view video from the unit. Besides, it also can be operated with the USB mouse to configure and monitor all the system easily.

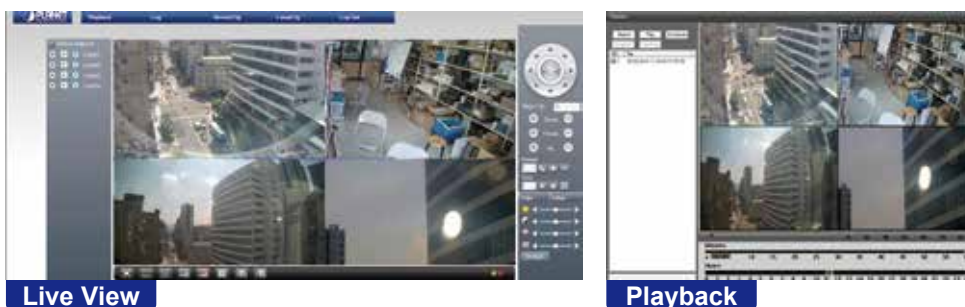


**Dual Local Display**

*Real-time Remote Monitoring*

Video from the HDVR systems can be accessed with Web browsers and Android mobile devices. With remote monitoring, you can view live and recorded video "on the go", allowing for easier monitoring of your video deployments, and the ability to react quickly to alarms and events.

**Real-time, Remote Monitoring**



*Managed via Central Management System (CMS)*

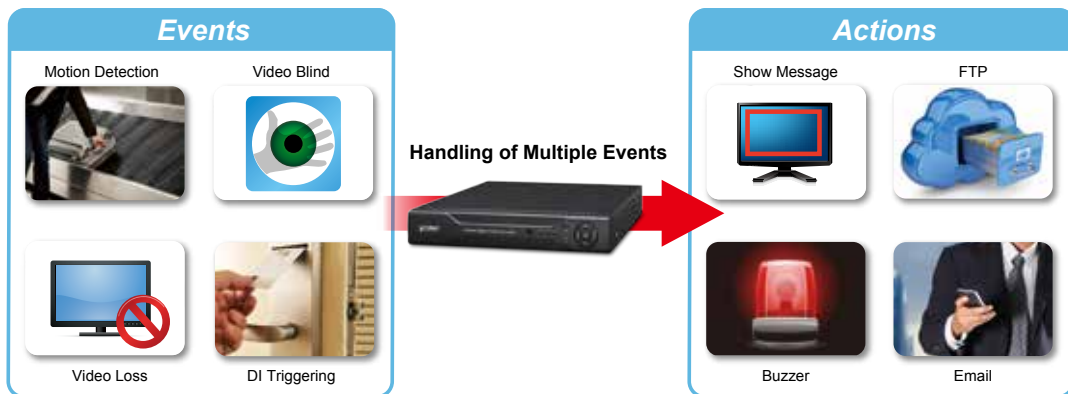
Not just for small scale applications such as retail stores and SMBs, the HDVR system is expandable for multi-site management with the bundled CMS software. The CMS software is able to manage up to 256 channels of cameras simultaneously. With friendly graphic interface, users can control any cameras or HDVRs easily and make a quick response when event is triggered. With CMS support, users are able to make surveillance more efficient.



## Applications

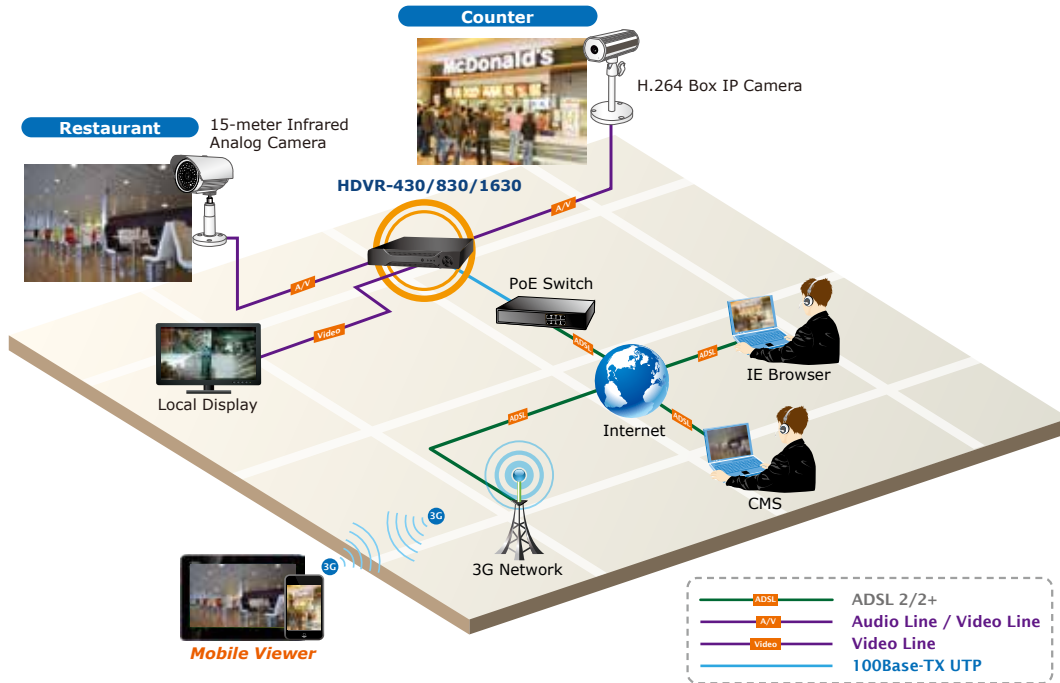
*Advanced Event Management*

The HDVR-1630 is equipped with a smart alarm-triggering mechanism and supports various alerts and abnormal events. When it comes to a critical event, having a smart and responsive event management in place is essential for video surveillance system. This feature greatly strengthens the security and management efficiency of PLANET HDVR systems.



*Perfect for Indoor Surveillance Applications*

PLANET HDVR systems can be controlled and monitored both in the local LAN and the remote site via Internet. Users can also login from their mobile phones to check the monitoring screen anywhere, anytime. It is especially perfect for indoor surveillance in such places as retail stores, communities, restaurants, etc.



## Specifications

|                  |  |
|------------------|--|
| Product          | HDVR-1630  |
| <b>Hardware</b>  |  |
| Ethernet         | 1 x RJ45, 10/100BASE-TX  |
| BNC Interface    | 16   |
| USB Interface    | 2 x USB 2.0 for backup device and mouse  |
| Video Interface  | VGA / HDMI video interface   |
| Audio Interface  | 2 x audio-in, 1 x audio-out  |
| Storage Device   | 1 x 3.5" SATA hard disk connector (max. 4TB)   |
| LED              | Power, Record, Alarm   |
| Button           | Menu, ESC, Direction & Enter   |
| <b>Camera</b>    |  |
| Max. Channels    | 16-channel cameras   |
| Add camera       | Manual / Smart Camera Search   |
| <b>Video</b>     |  |
| Video System     | PAL (625line, 50f/s); NTSC (525line, 60f/s)  |
| Compression      | H.264  |
| Resolution       | IP camera: 1080P<br>Analog camera: D1 / HD1 / CIF  |
| Encode Capacity  | 4-ch D1 & 12-ch CIF / 16-ch HD1 / 16-ch D1 real-time   |
| Decode Capacity  | 2-ch D1 & 6-ch CIF / 16-ch HD1 / 1-ch D1 real-time   |
| Hybrid mode      | Analog cameras: 16-ch 960H / 16-ch D1 / 16-ch HD1 / 16-ch CIF / 4-ch D1 & 12-ch CIF<br>Analog cameras & IP Cameras: 4-ch D1 & (1-ch 1080P + 3-ch 720P)<br>IP Cameras: 16-ch D1 / 2-ch 1080P & 2-ch 720P / 1-ch 1080P & 1-ch 720P & 6-ch 960H / 8-ch 720P |
| Motion Detection | Zones: 192 (16 x 12) detection zones<br>Sensitivity: multi-level sensitivity (only local channels)   |
| <b>Audio</b>     |  |
| Audio Type       | 2-way  |
| Audio format     | G.711A   |

|                                  |   |
|----------------------------------|---|
| <b>Live view</b>                 |   |
| Display Division                 | 1 / 4 / 8 / 9 / 16  |
| Snapshot                         | Video snapshot in JPEG format   |
| <b>Playback</b>                  |   |
| Record                           | Manual / Alarm / Motion Detection / Schedule  |
| Local Playback                   | 1~16ch simultaneous playback;<br>supports up to 1 channel playback (1 x D1@25FPS) in analog mode (16-ch x D1)   |
| Play Method                      | Play / Pause / Stop / Slow / Fast / Prev. Frame / Next Frame<br>Search by time / calendar / event / channel   |
| Download                         | Backup file to specific local HDD partition   |
| <b>Monitor</b>                   |   |
| Display Quality                  | Monitor: D1<br>VGA: HD<br>HDMI: HD  |
| <b>Network and Configuration</b> |   |
| Network Service                  | TCP / UDP / HTTP / DHCP / DNS / DDNS / RTSP / NTP / UPnP / FTP / SMTP   |
| Security                         | Password protection, IP address filtering   |
| <b>Triggers and Event</b>        |   |
| Event Type                       | <b>System Events</b> <ul style="list-style-type: none"> <li>■ No storage</li> <li>■ Storage Error</li> <li>■ Storage No Space</li> <li>■ Net Disconnection</li> <li>■ IP Conflict</li> </ul> <b>Camera Events</b> <ul style="list-style-type: none"> <li>■ Motion Detection / Video Blind / Video Loss / DI / DO</li> </ul> |
| Event Action                     | <ul style="list-style-type: none"> <li>■ Show Message</li> <li>■ Buzzer</li> <li>■ Mobile Reported</li> <li>■ Send e-mail</li> <li>■ FTP Upload</li> </ul>  |
| <b>Management</b>                |   |
| Remote Session                   | 5   |
| Privileges                       | Live View / Playback / System Configurations / Camera Configurations / Recording Configuration / Event Configuration / Maintenance  |
| User Interface                   | <ul style="list-style-type: none"> <li>■ Graphic local user interface (Operated by mouse )</li> <li>■ Web Browser (IE, Chrome, Firefox, Safari)</li> <li>■ CMS Utility</li> </ul>   |
| Log Type                         | All / System / Config / Storage / Alarm Event / Week Day / Account / Playback   |
| Software Utility                 | Search utility / CMS / APP  |
| <b>Environment</b>               |   |
| Power                            | 12V DC, 2A  |
| Consumption                      | 15W (without HDD)   |
| Operating Temperature            | 0~55 degrees C  |
| Storage Temperature              | 0~60 degrees C  |
| Humidity                         | 10~90% (non-condensing)   |
| Weight                           | 1.7 kg  |
| Dimensions (W x D x H)           | 255 x 225 x 45 mm   |

## Ordering Information

|           |                                     |
|-----------|-------------------------------------|
| HDVR-1630 | 16-Ch Hybrid Digital Video Recorder |
|-----------|-------------------------------------|

## Related Products

|            |  |
|------------|--|
| CAM-IR138  | 15-meter Infrared Camera                           |
| CAM-IR338  | 30-meter Infrared Camera                           |
| CAM-IR560V | 50-meter Infrared Vari-focal Camera                |
| CAM-IVP55V | 25~30-meter Infrared Vari-focal Vandalproof Camera |
| HDVR-430   | 4-Channel Hybrid Digital Video Recorder            |
| HDVR-830   | 8-Channel Hybrid Digital Video Recorder            |



PLANET reserves the right to change specifications without prior notice.

2015-04

Ein Vertriebsprodukt von / Distributed by:

**VIDELCO** Europe Limited – Professionelle Audio-, Video-, Medien-Technik  
Fon: +49 (0)2102 / 86 39-00 • Fax: +49 (0)2102 / 86 39-17 • [info@videlco.eu](mailto:info@videlco.eu) • [www.videlco.eu](http://www.videlco.eu)