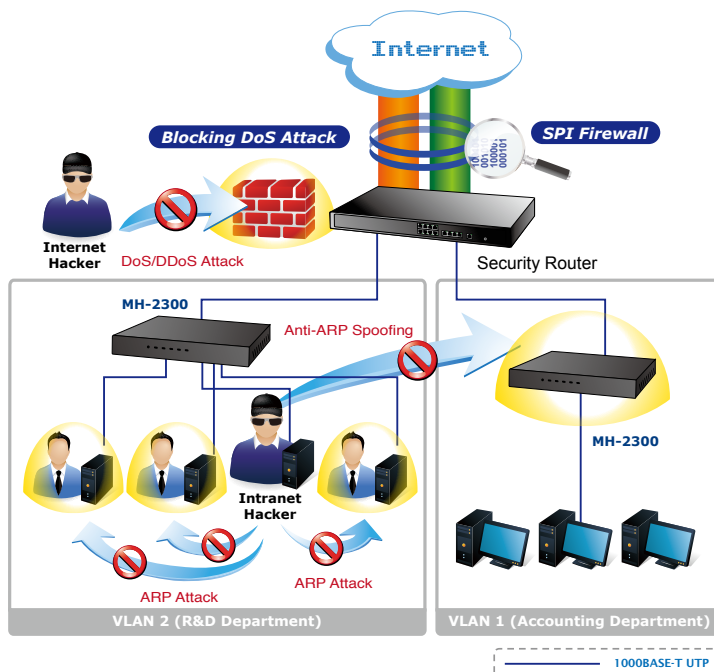


Gigabit Multi-Homing VPN Security Gateway



Appropriate Network Security Solutions

The innovation of the Internet has created a tremendous worldwide opportunities for e-business and information sharing. It has become essential for businesses, thus bringing network security issues into focus. The request for information security has become the primary concern for the enterprises. To fulfill the demand, PLANET has launched the MH-2300 Gigabit Multi-Homing VPN Security Gateway to help the SMBs increase the broadband network performance and reduce the risks of potential shutdown if one of the Internet connections fails. It also supports the enterprises by building a secure network protection. For further IP compatibility, it supports IPv6 as well.



Physical Port

- 5 x 10/100/1000BASE-T RJ-45, Undefined Ethernet port (WAN / LAN / DMZ).
- Multi-WAN function
- Outbound load balancing (Supported algorithms: Auto-Learning, Round-Robin, Session, Traffic, Packet, Source IP and Destination IP)

IP Routing Feature

- Static Route

QoS

- Guaranteed bandwidth
- Maximum bandwidth
- Priority
- Individual QoS
- P2P QoS
- Concurrent sessions management
- Quota (by session, per IP, per day)

Firewall Security

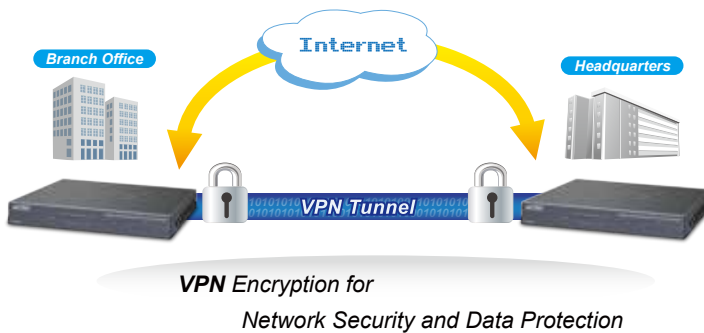
- Stateful Packet Inspection(SPI) firewall
- Blocking DoS attack
- Internal firewall
- IP and port filtering
- Block website by keyword, content filter, FQDN
- Anti-ARP spoofing

VPN Features

- Max. Connection Tunnel Entries: 25 of IPSec/PPTP-Client/Server
- Stateful packet inspection
- IPSec one-step wizard
- Encryption methods: DES, 3DES, AES-128/192/256
- Authentication methods: MD5, SHA-1, SHA-2-256
- Throughput: IPSec VPN 3DES Encryption

Cost-effective VPN Security Gateway Solution for SMBs

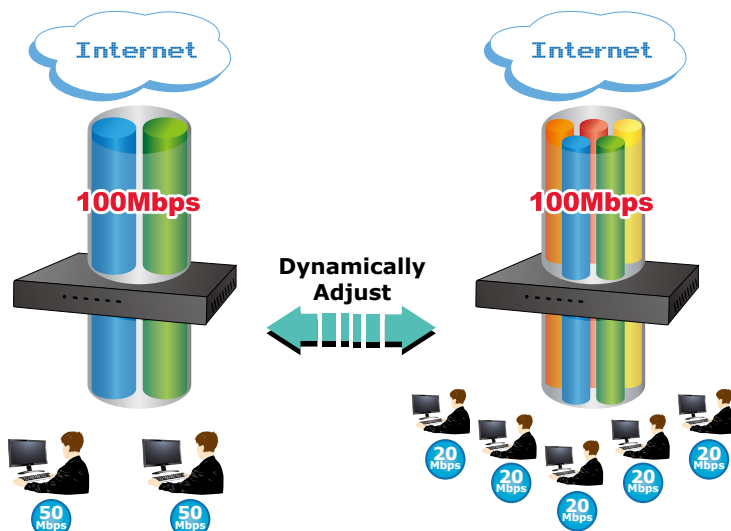
The MH-2300 supports most of the popular security features including content blocking to block specific URL, authentication, IPSec, PPTP VPN server/client, outbound load-balancing, QoS, time schedule, support group by IP, MAC and port; and more. Furthermore, it provides higher performance with all Gigabit Ethernet interfaces which offer faster speeds for your network applications. The Gigabit user-defined interfaces flexibly fulfill the network requirement nowadays, and the multiple WAN interfaces enable the MH-2300 to support outbound load balancing and WAN fail-over features. Built-in 25 IPSec VPN tunnels and 25 PPTP VPN tunnels are enough for about 50 companies. As a result, the VPN not only can configure trunk mode but also provide VPN fail-over, bandwidth multi-line consolidation and load balancing features which are a VPN redundant mechanism to always keep the VPN alive.



Improving Network Efficiency

Moreover, the MH-2300 has firewall, link redundancy, application control and other functions, so that the entire network system can be even better. PLANET MH-2300, the latest model of its kind, is closer to the application of the small-scale sector, using a 9-inch desktop silent fanless design, with five Gigabit user-defined ports (WAN / LAN / DMZ). The MH-2300's economical price with complete cable management features make it an inevitable choice for the next-generation office network load balancer.

The MH-2300's built-in fully-qualified domain name (FQDN) can automatically resolve the IP address corresponding to all; you just type the URL that is able to manage the secure websites (HTTPS) like Facebook, YouTube and Yahoo.



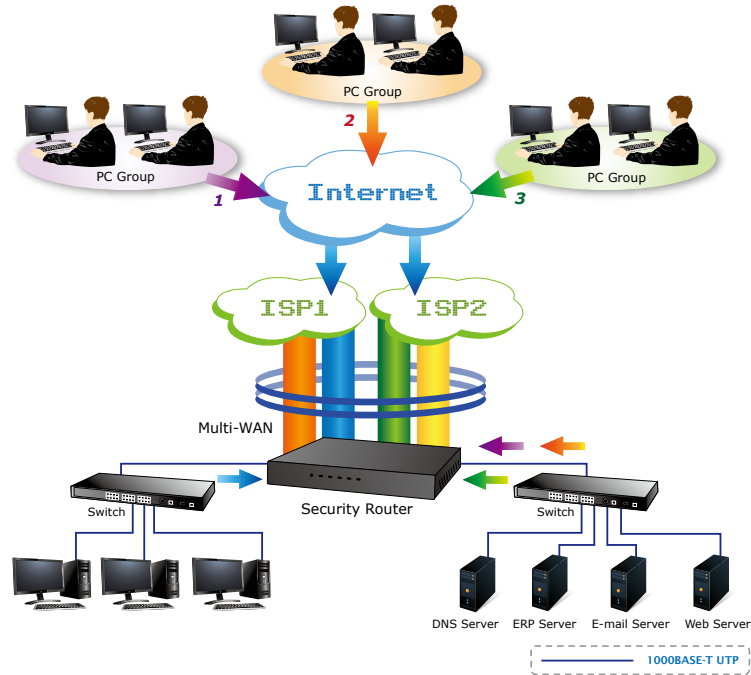
Networking

- PPPoE / Static IP / DHCP Client
- Protocols: TCP/IP, ARP, ICMP, FTP/TFTP, IPv4, IPv6
- NAT with popular ALG support
- Port forwarding
- DDNS: supports DynDNS, 3322, No-IP, Planet DDNS & Planet EasyDDNS
- Transparent bridge/transparent routing
- Policy-based routing (PBR)
- IP redirection

Network Management

- Supported access by HTTP, HTTPS, Telnet, SSH
- Comprehensive web-based management and policy setting
- SNMP agent (SNMPv3-capable)
- Monitoring, logging, and alarms of system activities
- Firmware upgrade through Web browse

The MH-2300 can connect multiple WANs with up to four different ISPs. It can create a stable and qualified VPN connection for many important applications such as VoIP, video conferencing and data transmission.

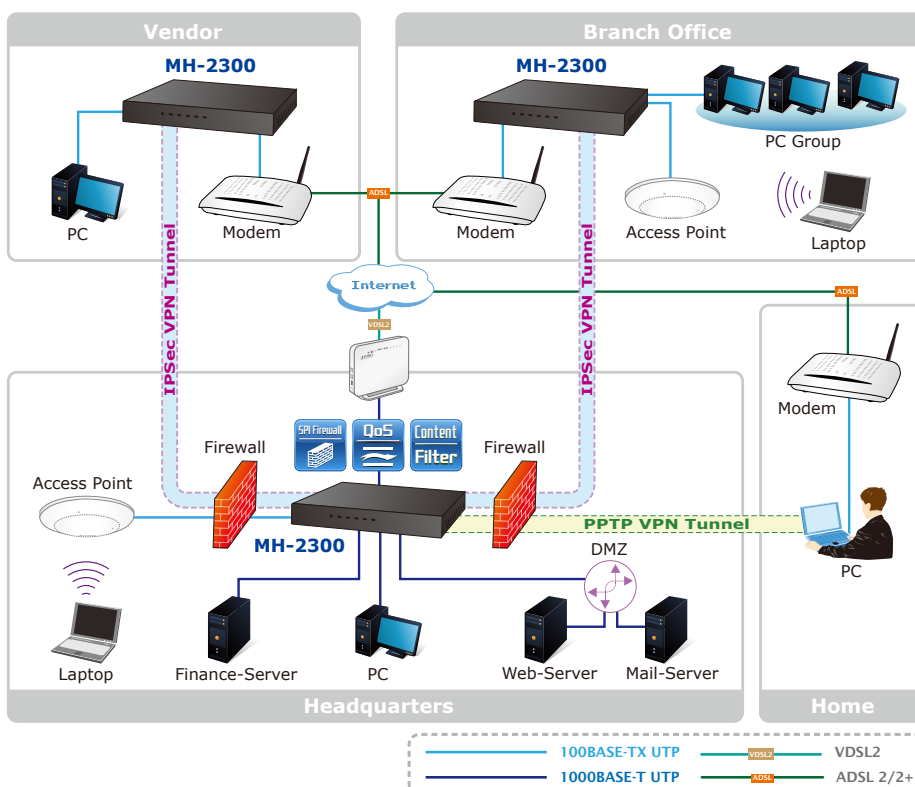


Applications

Multi-Homing VPN Security Gateway

PLANET MH-2300 Gigabit Multi-Homing VPN Security Gateway has an SPI firewall DoS function. Furthermore, through the FQDN, it can easily block secure websites like Facebook, YouTube, Gmail, etc. With IPSec and PPTP VPN solutions, the MH-2300 provides the secured data communication for branches, vendors, and mobile workers with a flexible way to connect back to the headquarters.

The MH-2300 can connect multiple WANs with up to four different ISPs. It can create a stable and qualified VPN connection for many important applications such as VoIP, video conferencing and data transmission.



Specifications

| | |
|------------------------------------|---|
| Product | MH-2300 |
| Hardware | |
| Ethernet | 10/100/1000BASE-T RJ-45 Undefined Ethernet port x 5 |
| H/W Watch-Dog | Auto-reboot upon failure |
| Software | |
| Management | Web (English, Traditional Chinese, Simplified Chinese) |
| Operation Mode | DMZ_Transparent, DMZ_NAT, NAT |
| Routing Protocol | Static route |
| Concurrent Sessions | 20,000 |
| New Session per sec. | 2,000 |
| Firewall Performance | 300Mbps |
| Firewall Security | Stateful Packet Inspection (SPI) Internal firewall |
| Multiple Subnet | Supports max. 16 multiple subnets |
| Outbound Load Balancing | Supported algorithms: Auto-Learning, Round-Robin, Session, Traffic, Packet, Source IP and Destination IP |
| Content Filtering | URL blocking Script blocking (Popup, Java Applet, cookies and Active X) P2P blocking (eDonkey, Bit Torrent, WinMX and more) Download and upload blocking |
| Application Blocking | IM blocking (MSN, Yahoo Messenger, ICQ, QQ, Skype, Google Talk and more) Multimedia streaming (PPLive, PPStream, ezPeer and more) Web-based mail (Google, Yahoo, Hotmail and more) Online game (GLWorld, QQGame and more) VPN tunneling (VNN, Client, Tor, FreeGate and more) Remote controlling (TeamViewer, Remote Destop and more) Auto update definitions |
| QoS | Guaranteed bandwidth priority levels Maximum bandwidth Priority |
| User Authentication | Built-in user database with up to 100 entries Supports local database, RADIUS, POP3 and LDAP authentication |
| Logs | Traffic Log, Event Log, Connection Log, Application Blocking Log, Concurrent Sessions Log and Quota Log. Log can be saved from web, backup by e-mail or syslog server or RSS feeds. |
| Statistics | WAN ports traffic statistic and policies statistic |
| Others | Dynamic DNS NTP support Outbound load balancing FQDN |
| VPN | |
| IPSec VPN Performance (With 3DES) | 20Mbps |
| VPN Tunnels (Connection/Configure) | 25 / 25 |
| VPN Function | IPSec, PPTP server and client DES, 3DES and AES encrypting SHA-1 / MD5 authentication algorithm |
| General | |
| Power Requirements | 100~240VAC, 50~60Hz, 0.3A |
| Power Consumption | 12W max. |
| Operating Temperature | 0 ~ 40 degrees C |
| Storage Temperature | -10 ~ 60 degrees C |
| Operating Humidity | 10 ~ 90% (non-condensing) |
| Weight | 0.65 kg |
| Dimensions (W x D x H) | 228 x 108 x 29 mm |
| Regulatory Compliance | CE, FCC |
| Reliability | MTBF > 672,324hrs |
| Connectors | 10/100/1000Mbps Ethernet, RJ-45 |

Ordering Information

| | |
|---------|--|
| MH-2300 | Gigabit Multi-Homing VPN Security Gateway (Multiple WAN, LAN, DMZ) |
|---------|--|

Related Products

| | |
|---------|--|
| MH-3400 | Gigabit Multi-Homing VPN Security Router |
| CS-2001 | UTM Content Security Gateway |
| SG-4800 | Gigabit SSL VPN Security Router |