

# VIDEO CONVERTER **VC-30HD**

HDV
DV
MPEG-2 TS
HDMI
COMPONENT
S-VIDEO
COMPOSITE

## INPUT

- Composite
- S-Video
- Component
- i.LINK (IEEE1394)
- HDMI**
- RCA Audio x2
- XLR Audio x2**
- AES/EBU
- HDMI Linear PCM
- SMPTE Timecode

## OUTPUT

- USB 2.0
- i.LINK (IEEE1394)
- Audio Delay**
- Embedded Audio

*Dual!!*



**Audio/Video Converter for Web Streaming and Capture/Archiving**

# Supports numerous video/audio format conversions

## SELECT

**VIDEO INPUT selector and indicators**

**OUTPUT FORMAT selector and indicators**

\*MPEG-2 TS bit rate can be set using VC-30HD RCS.

**ANALOG AUDIO INPUT selector, indicators and volume**



## INPUT

**ANALOG VIDEO INPUT connectors**

\*Up/Down conversion is not supported.

**HDMI INPUT connector**

\*Version 1.3, with Deep Color support  
\*HDCP (High-bandwidth Digital Content Protection) is not supported.

**i.LINK INPUT connector**

**AUDIO INPUT connectors**

\*Choose between balanced analog audio or digital AES/EBU and timecode.



## DUAL OUTPUT

**USB Video/Audio OUTPUT connector**

**i.LINK OUTPUT connector**

VIDEO CONVERTER **VC-30HD**

HDV DV MPEG-2 TS HDMI COMPONENT S-VIDEO COMPOSITE



# Simultaneous USB and IEEE1394 output for Web streaming and Capture/Archiving



## Supports numerous video/audio formats

Accepts HDMI, Component, composite, S-Video, IEEE1394, and analog or digital audio via RCA, XLR, and AES/EBU.

## High quality real-time encoder

Converts uncompressed analog/digital video to MPEG-2/HDV/DV.

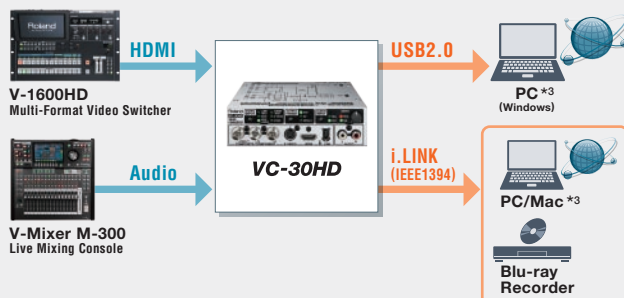
## Simultaneous USB and IEEE1394 output

For concurrent live event video encoding/streaming & recording applications

## Application Examples

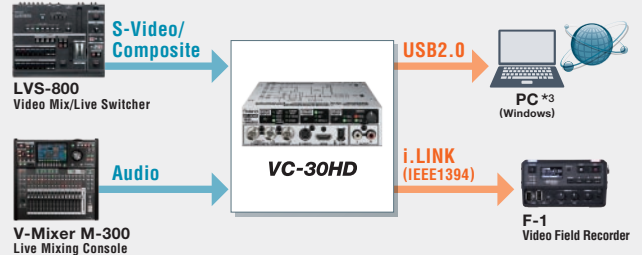
### HD Live Streaming

Converts and combines video and audio to MPEG-2 for live streaming. Simultaneously outputs to IEEE1394 and USB 2.0 ports.



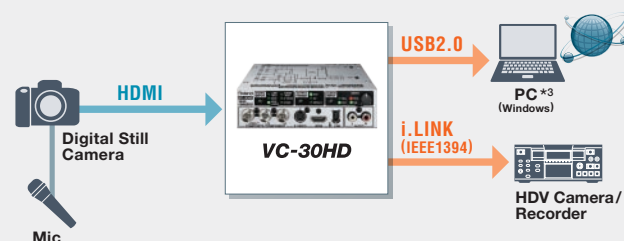
### Live Streaming + Backup Recording

Output from video and audio equipment can be combined and used for web streaming and recording to video devices for backup.



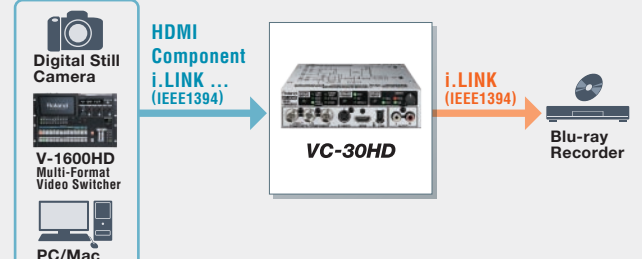
### DSLR Video Recording

Record from a digital still camera to PC and/or directly to another video device.



### Record to Blu-ray

Record directly to Blu-ray recorder from a digital still camera, a video mixer, a Non-linear Editor via VC-30HD.



\*1: USB output does not support embedded audio signal from IEEE1394 or control of audio volume.

\*2: Audio and Timecode can be embedded in the IEEE1394 video output.

\*3: Visit [www.rolandsystemsgroup.net](http://www.rolandsystemsgroup.net) for the latest information about PC operating system and application software compatibility with live streaming.

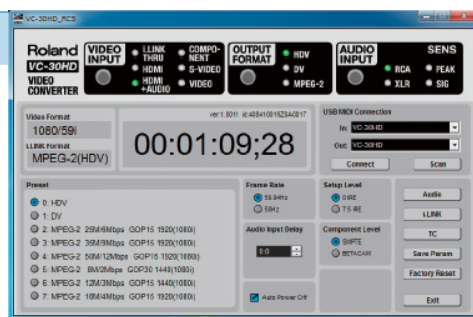
## VC-30HD RCS

Dedicated software, VC-30HD RCS\* enables greater control of numerous parameters.

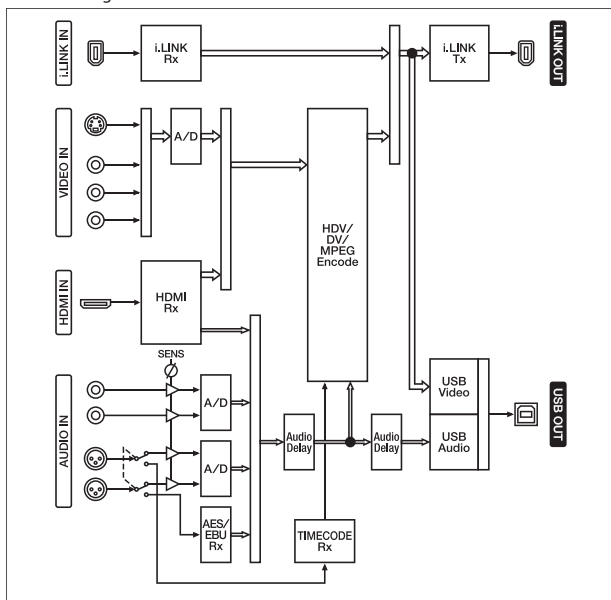
- Codec Bit Rate: MPEG-2 TS (HD: 50/35/25/18/12/8 Mbps, SD: 12/9/6/4/3/2 Mbps)
- Audio Input Delay: Max. 1sec by 1/10 frame
- Setup Level (NTSC): 0 IRE or 7.5 IRE
- Component Level: SMPTE or BETACAM
- Audio, i-LINK, timecode and more



\*VC-30HD RCS for PC or Mac can be downloaded from [www.rolandsystemsgroup.net](http://www.rolandsystemsgroup.net).

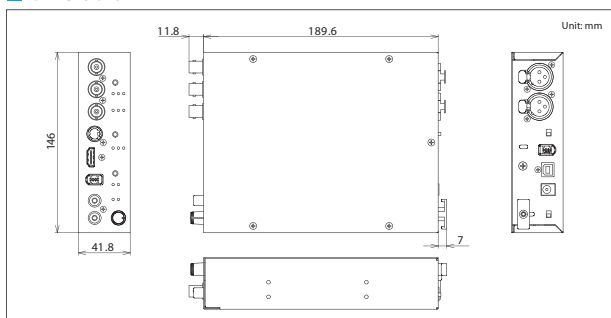


### Block Diagram



\*USB output does not support embedded audio signal from IEEE1394 or control of audio volume.  
\*Audio and Timecode can be embedded in the IEEE1394 video output.  
\*Audio level from HDMI, i-LINK, AES/EBU can't be controlled.

### Dimensions



### Specifications

Codec Type	HDV	Video Format: MPEG-2 Video, 8 bits, 4:2:0 1440 x 1080 / 59.94i / 50i / 23.98p (25 Mbps) 1280 x 720 / 59.94p / 50p (18.3 Mbps) 720 x 480 / 59.94p, 720 x 576 / 50p (18 Mbps) Audio Format: MPEG-1 Audio Layer2, 16 bits, 48 kHz, 2 ch (384 kbps)
	DV	Video Format: 720 x 480 / 59.94i, 720 x 576 / 50i Audio Format: Linear PCM, 16 bits, 48 kHz, 2 ch
Input	MPEG-2	Video Format: MPEG-2 Video, 8 bits, 4:2:0 1920 x 1080 / 59.94i / 50i / 23.98p (25 Mbps) *1 1280 x 720 / 59.94p / 50p (25 Mbps) *1 720 x 480 / 59.94p, 720 x 576 / 50p (25 Mbps) *1 720 x 480 / 59.94i, 720 x 576 / 50i (6 Mbps) *2 Audio Format: MPEG-1 Audio Layer2, 16 bits, 48 kHz, 2 ch (384 kbps)
	HDMI *3	Connector Type: Type A (19 pins) x 1 Video Format: 1920 x 1080 / 59.94i / 50i, 1280 x 720 / 59.94p / 50p 720 x 480 / 59.94p, 720 x 576 / 50p, 720 (1440) x 480 / 59.94i, 720 (1440) x 576 / 50i Audio Format: Linear PCM, 16 to 24 bit, 32 to 48 kHz, 2 ch
Output * 4	Component	Connectors Type: Y / Pb / Pr (BNC type) x 1 Video Format: 1920 x 1080 / 59.94i / 50i / 23.98pSF 1280 x 720 / 59.94p / 50p, 720 x 480 / 59.94p 720 x 576 / 50p, 720 x 480 / 59.94i, 720 x 576 / 50i Input Level: 1.0 Vp-p (Luminance), 0.7 Vp-p (Chrominance) Impedance: 75 ohms
	Composite	Connector Type: BNC type x 1 (Combined use with Component Y Connector) Video Format: NTSC, PAL, Input Level: 1.0 Vp-p, Impedance: 75 ohms
Input	S-Video	Connector Type: 4-pin mini DIN type x 1 Video Format: NTSC, PAL Input Level: 1.0 Vp-p (Luminance), 0.286 Vp-p (NTSC Chrominance) 0.3 Vp-p (PAL Chrominance) Impedance: 75 ohms
	i-LINK (Front)	Connector Type: 6-pin type (S100) x 1 Signal Format: HDV, DV (IEC61883-2), MPEG-2 TS (IEC61883-4) Maximum Bit Rate: 50 Mbps
Input	Audio (Front)	Connectors Type: RCA phono type x 1 pair (L/R) Input Level: -20 to +6 dBu, Impedance: 35 k ohms
	Audio (Rear)	Connectors Type: XLR type (balanced) x 1 pair (L/R) Input Level: -8 to +10 dBu, Impedance: 14 k ohms
Input	Digital Audio	Connector Type: XLR type x 1 (Combined use with Audio Rear R ch Connector) Signal Format: AES3, 16 to 24 bits, 32 to 48 kHz, 2 ch Impedance: 110 ohms
	Timecode	Connector Type: XLR type x 1 (Combined use with Audio Rear L ch Connector) Signal Format: SMPTE 12M LTC, Input Level: 0.5 to 18 Vp-p Impedance: 14 k ohms
Output * 4	i-LINK (Rear)	Connector Type: 6-pin type (S100) x 1 Signal Format: HDV, DV (IEC61883-2), MPEG-2 TS (IEC61883-4) Maximum Bit Rate: 50 Mbps
	USB	Connector Type: USB Type B (Hi-Speed USB) x 1 Signal Format: USB Video (DV, MPEG-2 TS), USB Audio (Audio, MIDI) Maximum Bit Rate: 25 Mbps (35 Mbps and 50 Mbps are not supported.)
Dimensions		146 (W) x 210 (D) x 42 (H) mm, 5-3/4 (W) x 8-5/16 (D) x 1-11/16 (H) inches
Weight		900 g (without AC Adaptor), 2 lbs

\*1: 25 Mbps is default value. MPEG-2 TS bit rate can be set using VC-30HD RCS.  
\*2: 6 Mbps is default value. MPEG-2 TS bit rate can be set using VC-30HD RCS.  
\*3: Version 1.3, with Deep Color support. HDCP (High-bandwidth Digital Content Protection) is not supported.  
\*4: i-LINK and USB output signals are the same bit rate. Up/Down conversion, i/P conversion, NTSC/PAL conversion, Frame conversion are not supported.

### Related Items

#### Fully bi-directional, Universal, multi-format converter

HDV/DV, DVI-D/A and Component I/O. VC-300HD includes SD/HD-SDI I/O. Up/Down/Cross Conversion as well as support for progressive formats and frame rates like 24p.



Multi-Format Converter  
**VC-300HD Ver.2**  
HDV DV HD-SDI SD-SDI DVI RGB COMPONENT



Multi-Format Converter  
**VC-200HD Ver.2**  
HDV DV DVI RGB COMPONENT

#### Bi-directional, portable video conversion

- Between HD/SD-SDI and MPEG-2 TS/HDV/DV
- Portable and Lightweight with High Performance
- HDMI Output enables convenient monitoring
- External/Internal Battery Support



Video Field Converter  
**VC-50HD**  
HDV DV MPEG-2 TS HD-SDI SD-SDI HDMI

#### Convenient Video Field Recorder

- HDV/DV/MPEG-2 TS Video Recorder
- Support MPEG-2 TS 2Mbps to 50Mbps
- Pre-Recording and Loop Recording
- Dedicated Utility Software can edit and convert video
- Network remote control function



Video Field Recorder  
**F-1 Ver.2**  
HDV DV MPEG-2 TS 2-2ch AUDIO USB 2.0 i-LINK



Roland Systems Group, a member of the worldwide group of Roland companies, is dedicated to the support of audio and video professionals demanding excellence in both performance and system design. Through the development and support of video and audio products, we endeavor to improve workflow and maximize creative possibilities.

#### Ensuring high quality while protecting the environment: Roland is ISO9001 and ISO14001 certified

At Roland, several group companies have obtained ISO9001 certification. In addition, in January 1999, Roland also received ISO14001 international environmental management system certification. We're actively seeking ways to maintain harmony with the environment. (ISO=International Standardization Organization: an organization for the promotion of standardization of international units and terms. They provide different categories of certification: ISO9001 Series certification is a product quality certification for products that undergo a certain level of quality control from the design stage to the after service stage; ISO14001 Series certification is for environment-related standards. Each member of the Roland Group is striving to obtain certification.)



Copyright 2011 Roland Corporation. All right reserved. All trademarks and logos are the property of their respective companies. All specification and appearances are subject to change without notice.