

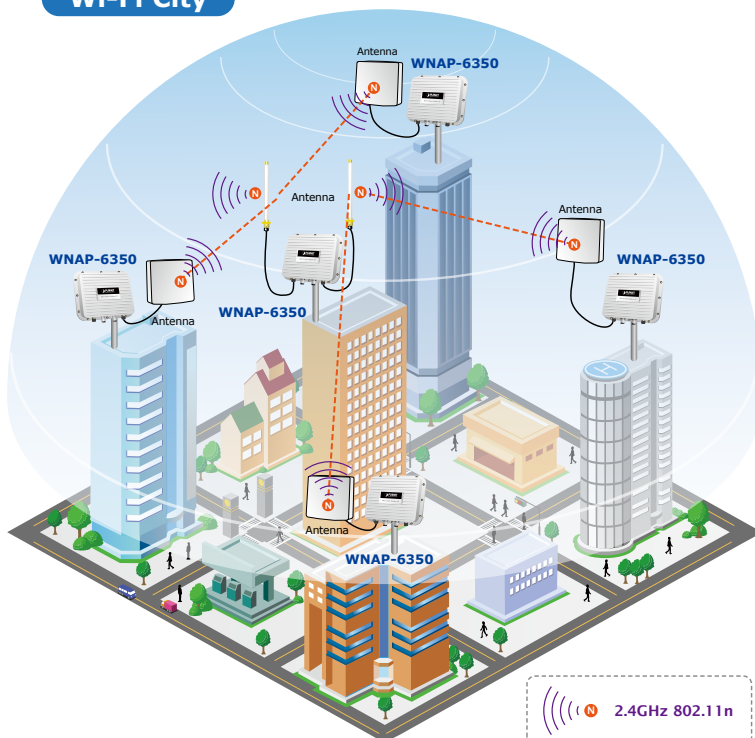
## 2.4GHz 300Mbps 802.11n Outdoor Wireless Access Point



### High Power Outdoor Wireless Coverage

PLANET has come out with the latest high power outdoor wireless LAN solution – the WNAP-6350 300Mbps PoE wireless outdoor AP. It provides **higher transmit power, better performance, wider coverage** and more **stable connection** than standard outdoor wireless AP. As an IEEE 802.11b/g/n compliant wireless device, the WNAP-6350 is able to give stable and efficient wireless performance for long distance application. Adopting IEEE 802.11n standard and 2T2R MIMO technology, the WNAP-6350 is possible to deliver six times faster data rate up to 300Mbps than the normal 802.11g wireless device. It also features adjustable output power up to 500mW to extend higher coverage in outdoor long range application.

### Wi-Fi City



### Industrial Compliant Wireless LAN & LAN

- Compliant with IEEE 802.11n wireless technology capable of up to 300Mbps data rate
- Backward compatible with 802.11b/g standard
- Equipped with 10/100Mbps RJ-45 ports for LAN and WAN, and auto MDI/ MDI-X

### Fixed-network Broadband Router

- Supported connection types: Dynamic IP / Static IP / PPPoE / PPTP / L2TP / IPSec
- Supports Virtual Server and DMZ for various networking applications
- Supports DHCP Server, UPnP and Dynamic DNS

### RF Interface Characteristics

- 2 built-in N-type female antenna connectors
- High output power up to 500mW with multiple adjustable transmit power control

### Outdoor Environmental Characteristics

- Aluminum housing, IP67 rating
- IEEE 802.3af/at power over Ethernet design
- Operating temperature: -30~75 degrees C

### Multiple Operation & Wireless Mode

- Multiple Operation Modes: Bridge, Gateway, WISP
- Multiple Wireless Modes: AP, Client CPE (WISP), WDS PtP, WDS PtMP, Repeater
- Supports dual-SSID allowing users to access different networks through one single AP
- Supports WMM (Wi-Fi Multimedia)

### Secure Network Connection

- Supports Software Wi-Fi Protected Setup (WPS)
- Advanced security: 64/128-bit WEP, WPA / WPA2, WPA-PSK / WPA2-PSK (TKIP/AES), and 802.1x authentication
- Supports NAT firewall features, with SPI function to protect against DoS attacks
- Supports IP / protocol-based access control and MAC filtering

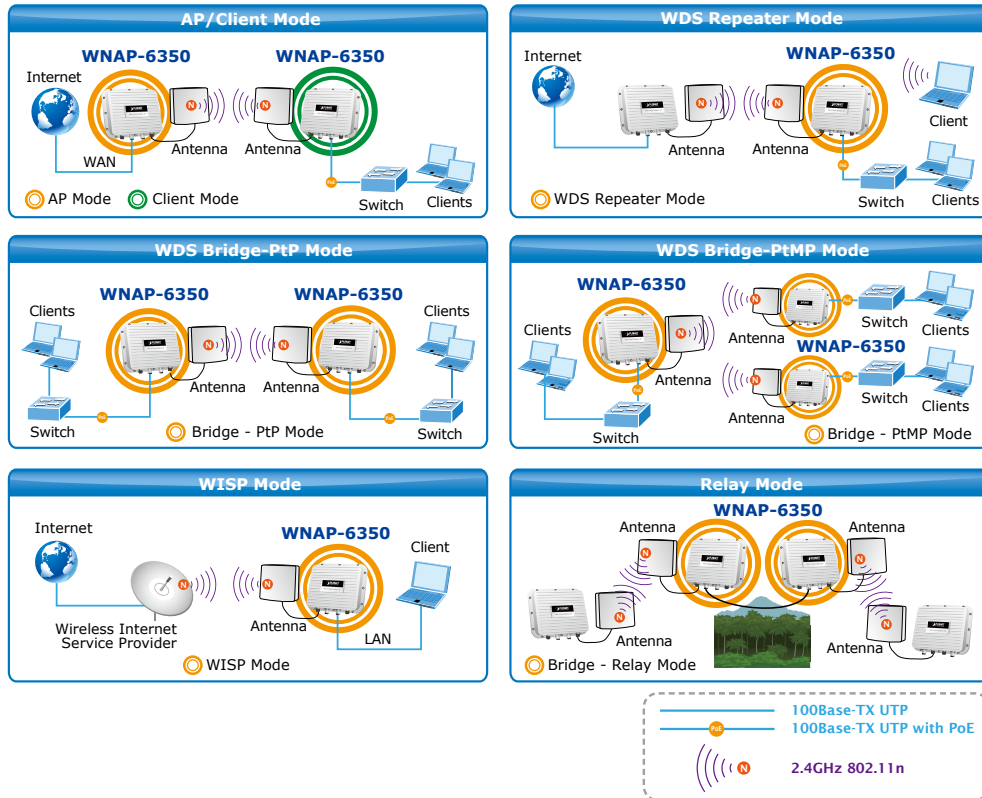
### Easy Installation & Management

- Web-based UI and Quick Setup Wizard for easy configuration
- Remote Management allows configuration from a remote site
- SNMP-based management interface
- System status monitoring includes DHCP Client and System Log

**Multiple Operating and Wireless Modes**

The WNAP-6350 supports multiple wireless communication connectivities (AP / Client CPE / WDS PtP / WDS PtMP / Repeater) allowing to meet various application requirements and thus it gives users more comprehensive experience when using the WNAP-6350. It helps users to easily build a wireless network and extend the wireless range of the existing wireless network.

The WNAP-6350 also supports WISP mode, so CPE users could easily connect to Internet via WISP provider or connect to a wired network.



**Advanced Security and Management**

In terms of security, besides 64/128-bit WEP encryption, the WNAP-6350 is integrated with WPA / WPA2, WPA-PSK / WPA2-PSK and 802.1x authority to secure and protect your wireless LAN. The wireless MAC filtering and SSID broadcast control consolidate the wireless network security and prevent unauthorized wireless connection. To meet the demand for enterprise and various applications, the WNAP-6350 enhances security and management features such as multiple SSIDs support..

**Perfect Solution for Outdoor Environment**

The WNAP-6350 is perfectly suitable for outdoor environments and exposed locations. With IP67 and aluminum rugged housing, the WNAP-6350 can perform normally under rigorous weather conditions including heavy rain, wind and snow. Moreover, the WNAP-6350 is rated to operate at the temperature from -30 to 75 degrees C and thus it can operate more stably than general outdoor equipment. It is the best way to use the WNAP-6350 to build outdoor wireless access applications between buildings on campuses, business communities, rural areas and more.

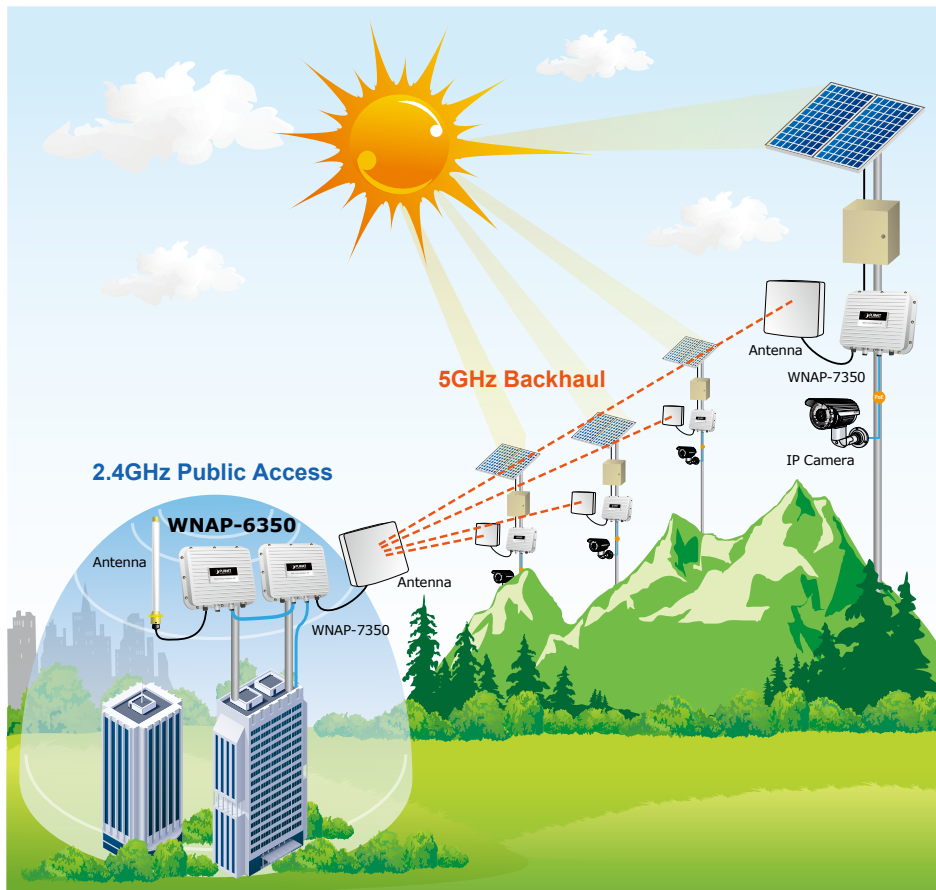
**Aluminum Housing, IP67 Protection**

The graphic highlights the device's rugged features and environmental tolerance:

- 30°C:** Operation in cold, snowy conditions.
- 75°C:** Operation in hot, sunny conditions.
- Lightning Protection:** Protection against electrical surges.
- Waterproof:** Protection against rain and moisture.

### Flexible Deployment with PoE Feature

Compliant with IEEE 802.3af/at Power over Ethernet standard, the WNAP-6350 can be powered by PSE (Power Sourcing Equipment) via a single UTP cable. It thus reduces the needs of extra cables and dedicated electrical outlets on the wall, ceiling or any other place that is difficult to reach. Furthermore, the WNAP-6350 is also suitable to be integrated with PoE Solar Power System to offer farther wireless service in remote areas. It enables the wireless LAN deployment to become more flexible and frees you from worry about power outlet locations.



### Easy Installation & Management

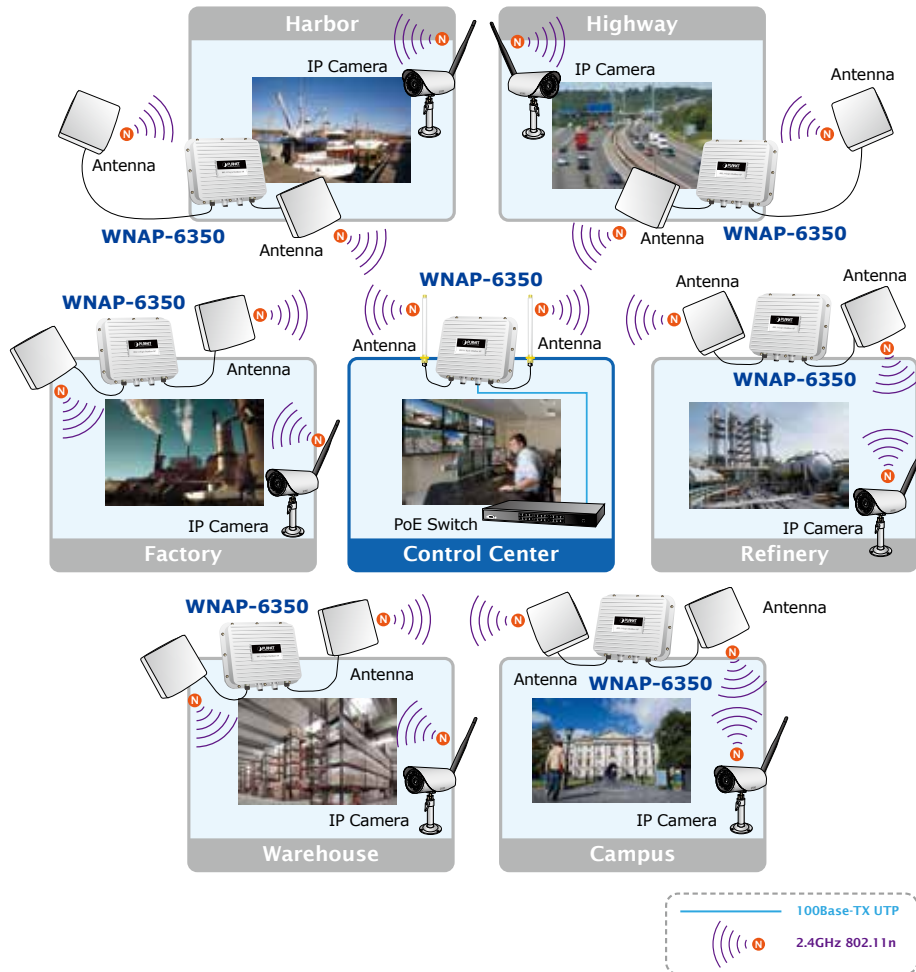
With user-friendly Web UI and step by step Setup Wizard, the WNAP-6350 is easy to install, even for users who never experience in setting up a wireless network. Furthermore, with SNMP-based management interface, the WNAP-6350 is convenient to be managed and configured remotely.

## Applications

### Longer Distance Coverage between LAN Connections

The WNAP-6350 is a cost-effective outdoor wireless solution for widely open space applications. It is ideal for outdoor wireless connections between buildings.

With two built-in N-type antenna connectors, the WNAP-6350 brings higher coverage and longer distance of wireless connection. The WNAP-6350 provides high output power with multiple adjustable Tx controller, which allows CPE users to easily install and adjust the suitable value in appropriate locations. The WISP mode supported in the WNAP-6350 also enables CPE users to connect to Internet via local WISP provider conveniently.



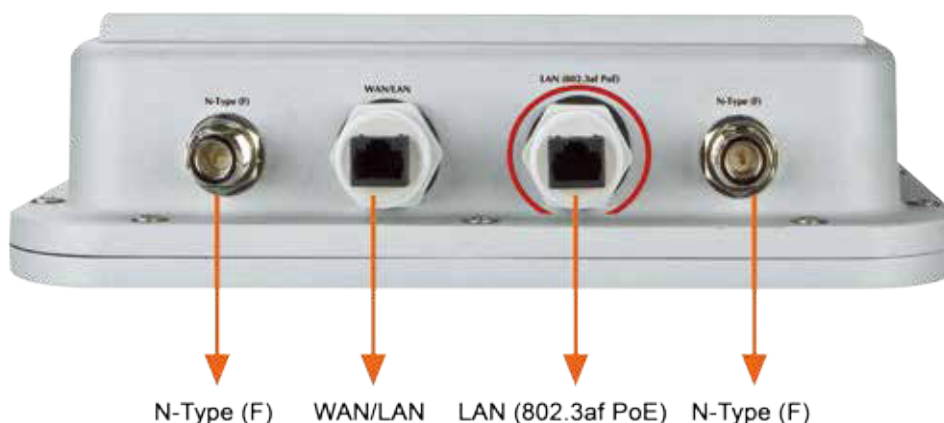
\*\*Sincerely suggest you match the same model in outdoor wireless bridge application for getting the best performance.

## Specifications

Model	WNAP-6350
<b>Hardware Specifications</b>	
Standard Support	IEEE 802.11b/g/n wireless LAN IEEE 802.3 10Base-T Ethernet IEEE 802.3u 100Base-TX Ethernet IEEE 802.3x flow control
Memory	32 Mbytes DDR SDRAM 8 Mbytes flash
PoE	802.3 af/at PoE
Interface	Wireless IEEE 802.11b/g/n, 2T2R LAN: 1 x 10/100Base-TX, auto-MDI/MDIX WAN: 1 x 10/100Base-TX, auto-MDI/MDIX
Antenna	N-type female connectors x 2
<b>Wireless RF Specifications</b>	
Data Rate	IEEE 802.11b: 11, 5.5, 2 and 1Mbps IEEE 802.11g: 54, 48, 36, 24, 18, 12, 9 and 6Mbps IEEE 802.11n (20MHz): up to 150Mbps IEEE 802.11n (40MHz): up to 300Mbps
Media Access Control	CSMA / CA
Modulation	Transmission / Emission Type: OFDM Data modulation type: OFDM with BPSK, QPSK, 16-QAM, 64-QAM
Frequency Band	2.412GHz ~ 2.484GHz
Operating Channel	America/FCC: 2.414~2.462GHz (11 Channels) Europe/ETSI: 2.412~2.472GHz (13 Channels) Japan/TELEC: 2.412~2.484GHz (14 Channels)
RF Output Power	IEEE 802.11b/g: 29 ± 1dBm IEEE 802.11n: 25 ± 1.5dBm
Receiver Sensitivity	IEEE 802.11b: -95/ -94/ -92/ -90dBm (1/ 2/ 5.5/ 11Mbps) IEEE 802.11g: -90/ -82/ -80/ -75dBm (6/ 24/ 36/ 54Mbps) IEEE 802.11n: -91/ -83/ -74/ -89/ -80/ -72dBm (MCS0/ 3/ 6/ 9/ 12/ 15)
Output Power Control	3~29dBm
Power Consumption	7.68W
Power Requirements	AP: IEEE 802.3af/at PoE / 48VDC input (PoE Injector included) PoE Injector: 100~240VAC
<b>Environment &amp; Certification</b>	
Operating Temperature	-30~75 degrees C
Operating Humidity	10~95% non-condensing
IP Level	IP67
Regulatory	CE / RoHS
<b>Software Features</b>	
LAN	Built-in DHCP server supports static IP address distributing Supports 802.1d STP (Spanning Tree)
WAN	<ul style="list-style-type: none"> <li>■ Static IP</li> <li>■ Dynamic IP</li> <li>■ PPPoE</li> <li>■ PPTP</li> <li>■ L2TP</li> <li>■ IPSec</li> </ul>
Operating Modes	<ul style="list-style-type: none"> <li>■ Bridge</li> <li>■ Gateway</li> <li>■ WISP</li> </ul>
Firewall	NAT firewall with SPI (Stateful Packet Inspection) Built-in NAT server supports Virtual Server and DMZ Built-in firewall with Port / IP address / MAC / URL filtering
Wireless Mode	<ul style="list-style-type: none"> <li>■ AP</li> <li>■ Client</li> <li>■ WDS PTP</li> <li>■ WDS PTMP</li> <li>■ WDS Repeater (AP+WDS)</li> </ul>
Channel Width	20MHz / 40MHz
Wireless Isolation	Enables it to isolate each connected wireless client so as to unable them to access mutually.

Encryption Type	64/128-bits WEP, WPA, WPA-PSK, WPA2, WPA2-PSK, 802.1X
Wireless Security	Provides wireless LAN ACL (Access Control List) filtering
	Wireless MAC address filtering
	Supports WPS (WIFI Protected Setup )
	Enable / Disable SSID Broadcast
Multiple SSID	Up to 2
Max. Wireless Client	40
Max. WDS AP	8
Max. Wired Client	60
WMM	Supports Wi-Fi Multimedia
QoS	Supports Quality of Service for bandwidth control
NTP	Network Time Management
Management	Web UI, DHCP Client, Configuration Backup & Restore, Dynamic DNS, SNMP
Diagnostic tool	System Log, Ping Watchdog
<b>Accessory</b>	
Standard Accessories	<ul style="list-style-type: none"> <li>■ PoE injector &amp; power cord x 1</li> <li>■ Mounting kit x 1</li> <li>■ Waterproof RJ-45 connector kit x 2</li> <li>■ Quick Installation Guide x 1</li> <li>■ CD (User's Manual, Quick Installation Guide) x 1</li> </ul>

## Interfaces



## Ordering Information

WNAP-6350	2.4GHz 300Mbps 802.11b/g/n Outdoor Wireless Access Point
-----------	--

## Accessories

CB-STP-25	25-Meter STP Cat5 Cable
ELA-100	Ethernet Lightning Arrest Box
ANT-OM8	2.4GHz 8dBi Omni-Directional Antenna
ANT-OM15	2.4GHz 15dBi Omni-Directional Antenna
ANT-FP9	2.4GHz 9dBi Flat Panel Directional Antenna
ANT-FP18	2.4GHz 18dBi Flat Panel Directional Antenna
ANT-SE18	2.4GHz 12-18dBi Adjustable Sector Antenna
ANT-YG13	2.4GHz 13dBi Yagi Directional Antenna
ANT-YG20	2.4GHz 20dBi Yagi Directional Antenna
ANT-GR21	2.4GHz 21dBi Grid Directional Antenna
WL-NM-0.6	0.6 Meter N-male (male pin) to N-male (male pin) Cable
WL-LTNA	2.4/5GHz Lightning Arrester (N-male to N-female)

2015-07

Ein Vertriebsprodukt von:

**VIDELCO** Europe Limited – Professionelle Audio-, Video-, Medien-Technik  
 Fon: +49 (0)2102 / 86 39-00 • Fax: +49 (0)2102 / 86 39-17 • nfo@videlco.eu • www.videlco.eu