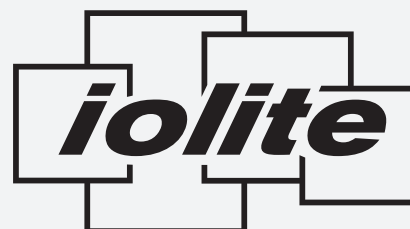


iolite 12i

Powerful and compact
video wall control



COMPACT VIDEO DISPLAY TECHNOLOGY

The ability to drive multiple screens from a single, simple controller is a key requirement for businesses wanting the ability to display video, news feeds, corporate messaging and traditional signage in their reception areas, as well as enhancing their conferencing and presentation facilities.

The iolite 12i is a compact wall controller designed specifically for environments that require very low noise levels, where space is at a premium. It is rack mountable and includes twelve integrated HDMI outputs, and three 4K DisplayPort outputs¹. The two integrated x4 Gen.3 PCIe slots can be populated with various Datapath capture cards or SQX (IP decode) cards² to meet specific needs, making it the perfect choice for smaller video wall installations requiring a compact, quiet controller that still offers a degree of flexibility and configuration.

DRIVING VIDEO WALL INSTALLATIONS

Combined with a high performance Windows system, the iolite 12i can drive multiple screens simultaneously, delivering video captured from a range of sources including media players, television set top boxes, IP cameras and online or local media. The iolite 12i is available as standard with an Intel Corei5 processor, 240GB SSD hard drive and 8GB RAM. Upgrade options are available to allow the inclusion of additional, high capacity SSD drive, increased memory (up to 16GB) and Intel Corei7 processor.



Engineering the **world's best** visual solutions

DATAPATH
EXCELLENCE BY DESIGN

Ein Vertriebsprodukt von / Distributed by:

VIDELCO Europe GmbH – Professionelle Audio-, Video-, Medien-Technik

Telefon: +49 (0)2102 / 86 39-00 • Fax: +49 (0)2102 / 86 39-17 • info@videlco.eu • www.videlco.eu


VIDELCO
Europe GmbH

Powerful and compact video wall control

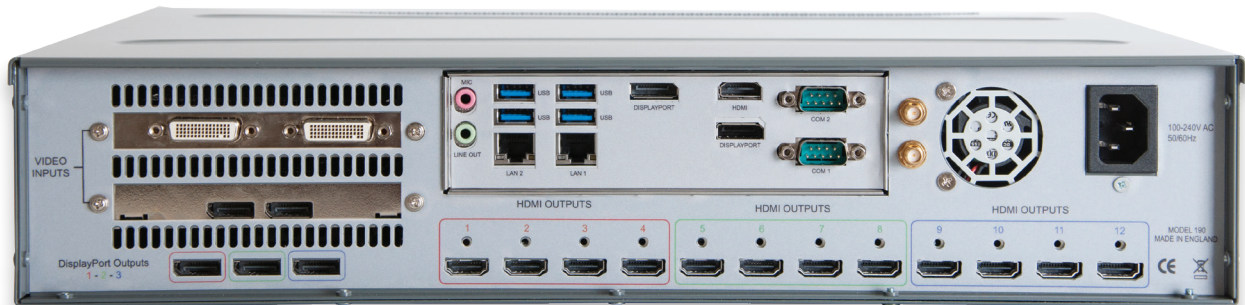
OUTPUT CONFIGURATIONS

The iolite 12i offers users the flexibility to enable various combinations of the on-board DisplayPort and HDMI outputs depending on the application and requirements.

The supported configurations are shown below:

Active/Connected DisplayPort	Available HDMI
0	12
1	8
2	4
3	0

As shown, use of each DisplayPort connection replaces 4 HDMI ports. The HDMI ports are grouped as shown in the image below, with HDMI ports 1-4 linked to DisplayPort 1; HDMI ports 5-8 linked to DisplayPort 2, and HDMI ports 9-12 linked to DisplayPort 3.



Note: All HDMI ports in each group must be configured to run at the same resolution (maximum of 1920 x 1080p at 60fps)

FULLY FEATURED WALL CONTROL

The iolite 12i is compatible with Datapath's WallControl 10 software. WallControl 10 allows users to quickly and easily place video sources anywhere on the video wall. Common arrangements can be saved as layouts for recall at any time and any section of the wall can contain "carousels" of videos playing one after the other at definable intervals. Administrators of WallControl 10 are able to configure a single system to drive multiple walls. Each of these walls can be assigned a number of user roles, and each user role can allow different access to sources, local videos, layouts and templates.³

COMPATIBILITY

The iolite12i is compatible with Windows 10 LTSB operating system⁴.

SPECIFICATION

MOTHERBOARD

SBC

COTS mini ITX motherboard with HDMI & DisplayPort control screen

Outputs

12 x integrated HDMI outputs (1920 x 1080p at 60fps)

3 x integrated DisplayPort 1.2 outputs (3840 x 2160p at 60fps)¹

Expansion slots

2 x PCIe x4 Gen3

USB connectivity

4 x USB 3.0 Ports (Rear)

2 x USB 2.0 Ports (Front)

Ethernet

2 x Intel Gigabit LAN

Wi-Fi

Optional (via USB adapter)

PROCESSOR

Standard

Intel Corei5

Optional Upgrade

Intel Corei7

MEMORY

Standard

8GB

Optional Upgrade

16GB

DISK STORAGE

Standard

128GB MSATA SSD

Optional Upgrade

Additional 1TB disk for storage

POWER SUPPLY

ATX 250 watts

DIMENSIONS

Size

296mm (l) x 90mm (h)

x 427mm (w)

Weight

10 - 15kg (shipped 15 - 20kg)

COMPLIANCE

FCC / CE / RoHS

¹ Each active DisplayPort replaces 4 HDMI outputs. Configurations can be split (e.g. one active DisplayPort with 8 HDMI).

² The following cards are suitable for use: within the iolite 12i: VisionSC-DP2, VisionSC-HD4+, VisionSC-SDI4, VisionSD8, VisionAV-HD & ActiveSQX.

³ MultiWall and User Rights Management are only available with WallControl 10 Pro.

⁴ Datapath systems are not compatible with Windows 10 Home Edition.

All products are shipped with the latest software versions, unless stated otherwise. The specification stated is a minimum only. Higher specification systems may be provided without prior notice. Special requirements may be organised by contacting our Sales team.

DATAPATH
EXCELLENCE BY DESIGN

Ein Vertriebsprodukt von / Distributed by:

VIDELCO Europe GmbH – Professionelle Audio-, Video-, Medien-Technik

Telefon: +49 (0)2102 / 86 39-00 • Fax: +49 (0)2102 / 86 39-17 • info@videlco.eu • www.videlco.eu

VIDELCO
Europe GmbH