

HD-One Wall Plate

MG-WP-611

Switchable VGA and HDMI Transmitter



MAGENTA
by tvONE

OVERVIEW

The HD-One wall plate Transmitter series enables switching and extension for HDMI (up to 4K) and VGA (up to 1080p) signals, while providing HD extension up to 70 meters (230ft) and 4K extension up to 40m (130ft). Available in regionally specific form factors, the MG-WP-611-US and MG-WP-611-EU, are easily powered by a local power supply or the MG-CT-612 Receiver with integrated Power over HDBaseT (POH). You can also connect to any Magenta HD-One RX or tvONE CORIO products providing extra flexibility and reliability.

MG-WP-611-US	HDBT wall plate TX with VGA and HDMI 1.4 input, extend 4K to 130', HD to 230' US form factor
MG-WP-611-EU	HDBT wall plate TX with VGA and HDMI 1.4 input, extend 4K to 40m, HD to 70m EU form factor
MG-CT-612	HDBT Receiver with POH for MG-WP-611 wall plates, HDMI 1.4

KEY FEATURES

- ▶ HDMI, VGA and Audio inputs with RS-232 control
- ▶ Inputs can be switched automatically, manually or by RS-232 control
- ▶ High quality matte anodized aluminum finish (US version featuring a decora plate)
- ▶ Delivers full uncompressed HD video 3D and 4Kx2K, RS-232 and IR
- ▶ Supports VESA resolutions up to 1920x1200@60Hz and HDTV resolutions up to 1080p
- ▶ HD extension up to 70 meters (230ft) and 4K extension up to 40m (130ft)
- ▶ Automatically match signals to display native resolution with built-in scaling
- ▶ PoH (power over HDBaseT) allows powering from the receiver (MG-CT-612)

2018-08

Ein Vertriebsprodukt von / Distributed by:

VIDELCO Europe GmbH – Professionelle Audio-, Video-, Medien-Technik

Fon: +49 (0)2102 / 86 39-00 • Fax: +49 (0)2102 / 86 39-17 • info@videlco.eu • www.videlco.eu


VIDELCO
Europe GmbH

SPECIFICATIONS

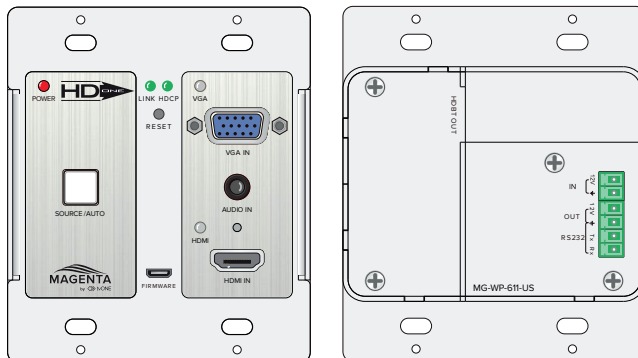
Input	1x HDMI 1x VGA 1x 3.5mm Analog audio 1x HDBT via RJ45 (rear) 1x RS-232 via 3-pin terminal block (rear) 1x IR Sensor (EU/UK only) 1x micro USB (FW only)
Control	via Front button and RS-232 control
Video support	VGA up to 1920x1080@60Hz HDMI 1.4 up to 4Kx2k@60
Audio impedance	>10Ω
HDCP compliance	HDCP 1.4
Extension	1080p up to 230 ft (70m), 4K up to 130ft (40m)
Bandwidth	10.2Gbps

Power	Via 12V 2A DC power supply or POH from Receiver ¹
Consumption	9.6w (max)
Operating temp	-10° to 40°C (14° to 104°F)
Humidity	10% to 90%
Dimensions (H x W x D)	3.5" x 4.1" x 1.7" (89 x 105 x 44mm) – US 3.1" x 0.9" x 1.7" (80 x 151 x 44mm) – EU
Weight (Net)	0.52 lbs (238g) - US 0.57 lbs (258g) - EU
Warranty	3 Years
MTBF	TBD
Regulatory compliance	FCC, CE

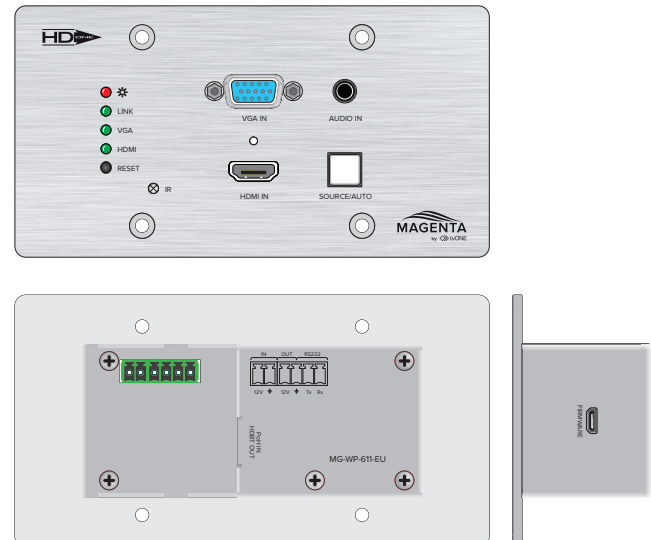
¹ Use the MG-CT-612 for POH

Specifications subject to change without notice

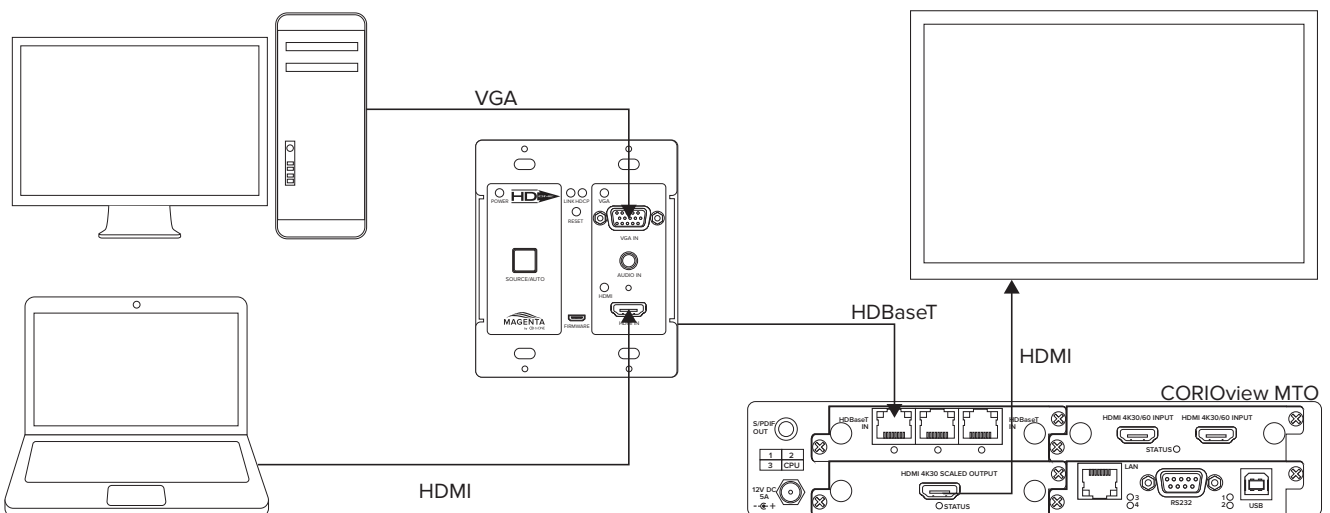
MG-WP-611-US



MG-WP-611-EU



APPLICATION DRAWING



2018-08

Ein Vertriebsprodukt von / Distributed by:

VIDELCO Europe GmbH – Professionelle Audio-, Video-, Medien-Technik

Fon: +49 (0)2102 / 86 39-00 • Fax: +49 (0)2102 / 86 39-17 • info@videlco.eu • www.videlco.eu