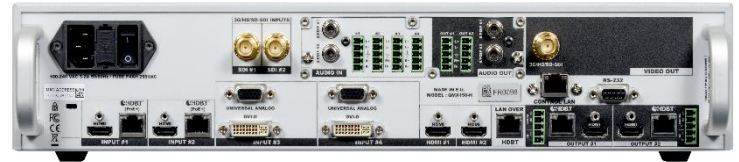
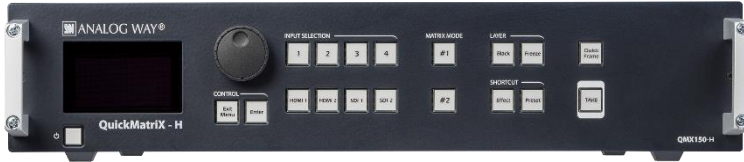


QuickMatrix - H

Ref. QMX150-H



Eight-input hi-resolution seamless matrix scaler with two HDBaseT™ inputs and two mirrored HDMI / HDBaseT™ outputs



Flexibility and Versatile Connectivity

The **QuickMatrix - H** is a powerful hi-resolution true seamless matrix scaler featuring 8 seamless inputs and 12 input connectors (four HDMI, two DVI, two 3G-SDI, two HDBaseT™ and two universal analog). The **QuickMatrix - H** offers two independent program outputs with mirrored HDMI and HDBaseT™ connectors. It also supports advanced audio inputs and outputs functionalities and includes a 3G-SDI output useable as video output or Program clone.

Quality without Compromise

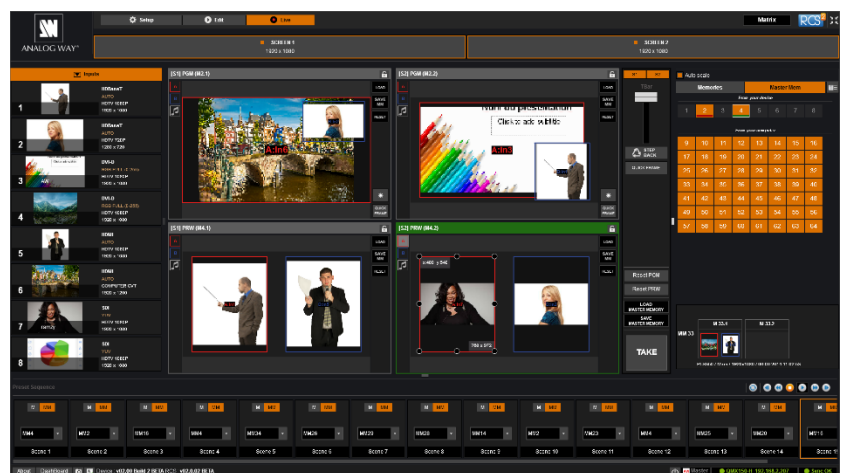
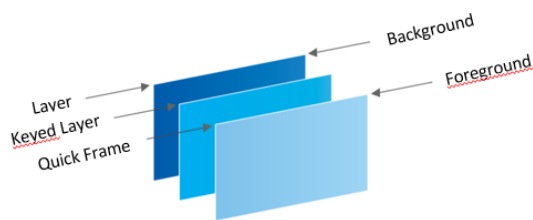
Based on the extremely reliable and cost-effective MIDRA™ platform, the **QuickMatrix - H** offers ultra-low latency image processing, uncompromising video quality, true seamless switching, custom output formats and advanced video effects for elegant AV presentations, which makes it an ideal solution for live events, fixed installations, houses of worship and educational facilities.

Simplified Integration with direct HDBaseT™ Compatibility

The **QuickMatrix - H** has been designed using HDBaseT™ Alliance specifications, ensuring interoperability with other HDBaseT™ certified products. It features two HDBaseT™ inputs with embedded audio, Ethernet and PoE+ support. The **QuickMatrix - H** also includes two HDBaseT™ outputs that can deliver digital video and embedded audio, with Ethernet pass through plus bidirectional RS-232 and IR signals up to 492 feet (150 meters) over a shielded CAT 5e/6 cable directly to HDBaseT™ enabled displays. This allows reducing installation cost and even greater flexibility for your integration requirements.

Powerful and Flexible Control Options

The **QuickMatrix - H** has been designed to be entirely operated from the easy-to-use front panel. Each MIDRA™ model can also be easily controlled using the intuitive drag & drop software user interface: the **RCS²**. The **QuickMatrix - H** offers IP (Ethernet) control via a standard TCP/IP socket connection and an RS-232 serial interface supported by all major third-party control systems. Additionally, the **QuickMatrix - H** can be controlled by a comprehensive range of remote control panel options such as the **RK-350** keypad or the **Shot Box²**.



QuickMatrix - H at a glance

- ▶ Based on the Midra™ platform
- ▶ 8x2 seamless scaled matrix
- ▶ Heavy-duty design for incredible reliability
- ▶ High quality, ultra-low latency video processing
- ▶ Two HDBaseT™ inputs and two HDBaseT™ outputs
- ▶ Advanced audio management
- ▶ User-friendly and intuitive graphic interface

	QuickMatrix - H	Pulse² - H	SmartMatrix² - H	Saphyr - H
Operating modes	1	2	1	2
Inputs (HDBaseT™)	8 (2)	8 (2)	10 (4)	10 (4)
Outputs (HDBaseT™)	2 (2)	2 (2)	2 (2)	2 (2)
Video Output	1	1	1	1
Transitions & Effects	+	+	++	+
Live Layers (up to)	1 + 1 keyed	2	2	3

KEY FEATURES

MIDRA™ platform: uncompromised processing and manufacturing quality

1 operating mode: Native Matrix

8 seamless inputs

Capability to switch between any input plugs (12 input plugs available)

2 outputs: Output#1 and Output#2

Video output: Digital SD/HD TV (3G-SDI)

HDBaseT™ plugs:

- 2 inputs with PoE+ (48V; 30W) and support of video, embedded audio and Ethernet pass-through

- 2 outputs with support of video, embedded audio, Ethernet, bidirectional RS232 and IR

- Point-to-point transmission up to 492ft (150m) with unshielded CAT 5e/6 cables with foil shielding twisted pair (ISO/IEC 11801 U/FTP)

- HDMI and HDBaseT™ outputs can output simultaneously

High performance video processing:

- Very fast seamless switching
- Ultra-low latency processing
- Chroma/Luma Key and Titling
- Resizable Live Background
- Ability to modify the Program in real time without using the Preview
- Custom output formats
- Advanced de-interlacing processing
- New freeze features (input/layer/screen)
- Transitions: Fade, Cut, Wipe, Slide

Advanced Audio Management:

- Embed/De-Embed audio on all plugs
- Breakaway Audio mode
- Top Layer mode
- Balanced Stereo audio on all outputs
- Fast Routing mode
- Delay compensation (manual up to 80ms or auto)

Quick Frame mode: Instantly display a stored frame above all layers

Internal test patterns: Select between 9 available test patterns

EDID Management: Management on 6 inputs; Ability to read & display outputs EDIDs

HDCP Compliant: Enable/Disable the HDCP (*if the display is not compliant, the output image could be disabled*)

Memories:

- 8 Memory Presets per output and up to 64 via RCS²
- 8 Full frames

RCS²: Remote Control Software for Windows and Mac

Dimension (in Rack Units - RU)

- ▶ 2RU

Dimensions (without rack ears and rear rack mount)

- ▶ W 17.28" x H 3.46" x D 17.71"
- ▶ L 439.5 mm x H 88 mm x P 450 mm

Dimensions (with handles)

- ▶ W 19" x H 3.46" x D 18.70"
- ▶ L 482.1 mm x H 88 mm x P 475 mm

Weight without accessories

- ▶ 7.2 kg / 15.87 lbs

Shipping weight accessories included

- ▶ 10.2 kg / 22.49 lbs

Operating conditions

- ▶ Temperature: 0 to 40°C (32 to 104°F)
- ▶ Humidity: 10% to 80%, non-condensing

Thermal dissipation

- ▶ 529 BTU/hr

Noise (@1,6m height @25°C)

- ▶ Front: 41 DBa@1m
- ▶ Rear: 41 DBa@1m

Warranty

3-year warranty on parts and labor back to factory

Power Supply

- ▶ 100-240 VAC 50/60Hz 3.2A
- ▶ Fuse cartridge F4AH 250VAC 5x20mm
- ▶ Max consumption: 155 W (with 2x24 W PoE)

Safety Compliance

- ▶ IEC/UL/EN 60950-1, CSA22.2#60950-1, ETL Listed (US & Canada)

Supplied with

- ▶ 1 x Power supply cord
- ▶ 1 x Pair of front handles + screws
- ▶ 1 x Ethernet cross cable (for device control)
- ▶ 8 x MCO 5 pin connectors
- ▶ 1 x Quick Start Guide including safety instructions*

INPUTS

8 seamless inputs, 12 total input plugs

2 x DVI-D up to 2048x1152@60Hz

4 x HDMI up to 2048x1152@60Hz

2 x Universal Analog up to 2048x1152@60Hz

2 x 3G/HD/SD-SDI up to 2K@60Hz

2 x HDBaseT™ with PoE+ up to 2048x1152@60Hz

OUTPUTS

2 outputs with 2 plugs per output

2 x HDMI up to 2048x1152@60Hz

2 x HDBaseT™ up to 2048x1152@60Hz

1 x 3G-SDI up to 2K@60Hz, useable as video output or program clone

AUDIO

5-pin MCO connectors: 4 for analog audio inputs and 2 for analog audio outputs

4 RCA connectors: 2 for S/PDIF audio inputs and 2 for S/PDIF audio outputs

Input:

DVI (as HDMI) / HDMI / SDI Audio de-embedded

4 x Audio stereo Analog (Balanced/Unbalanced)

2 x S/PDIF (AES-3id compatible)

Output:

HDMI / SDI Audio embedded

2 x Audio stereo Analog (Balanced/Unbalanced)

2 x S/PDIF (AES-3id compatible)

STANDARDS

SMPTE: ST 259:2008, ST 260:1999, ST 274:2008, ST 292-1:2012, ST 296:2012, ST 424:2012, ST 428-19:2010
VESA: GTF1.1, CVT 1.1, DMT1.0 rev.12

MATRIX MODE

Seamless switching on each output

1 live layer + 1 keyed layer (only available with RCS², RK-350 or Vertige™ controller) on each output

CONTROL

Full-featured Front Panel

RCS²: Remote Control Software with intuitive GUI

RK-350: Remote Keypad

SB80-2: Shot Box²

AMX/Crestron drivers

OTHER FEATURES

DB9: RS232 for remote control

RJ45: Ethernet connection

*All technical specifications and videos are available on www.analogway.com

 Specifications subject to change without prior notice

Distributor / Vertrieb:

Ein Vertriebsprodukt von / Distributed by:

VIDELCO Europe GmbH – Professionelle Audio-, Video-, Medien-Technik

Telefon: +49 (0)2102 / 86 39-00 • Fax: +49 (0)2102 / 86 39-17 • info@videlco.eu • www.videlco.eu

QM150-H-EN-04/30/2018


VIDELCO
Europe GmbH