

10Gbps SFP+ PCI Express Server Adapter



Enhanced from the current highly-praised version, PLANET has released a brand-new version of the 10Gbps SFP+ PCI Express Server Adapter – the ENW-9801 version 2. The new version of the ENW-9801 is upgraded with PCI Express rev. 2.0 specification x4 interface and other advanced features as follows:

- Smaller and Compact in design
- Flexible 10G SFP+ Module Installation
- Low Profile Bracket

The Server Level Adapter to Expand Networking Environments

The ENW-9801 is a PCI Express 10Gbps Ethernet Adapter designed to meet high-performance system application requirements. With the innovative PCI Express Bus Architecture, the ENW-9801 provides superior performance than the network cards based on 32/64bit PCI architecture. It provides the best solution to one of the major issues of Server Farm Networks -- communication speed. Ten times faster than the existing 1000Base-SX/LX fiber solutions, PLANET ENW-9801 is designed to connect your servers and workstations, guaranteeing extremely high throughput and excellent signal quality.

Moreover, the ENW-9801 supports IEEE 802.1Q VLAN which allows it to operate in a flexible and secure network environment. With 16K Jumbo Frame ability and IEEE 802.3 Flow Control support, it further optimizes throughput and wire-speed packet transfer performance without risk of packet loss. The high data throughput of the device makes it ideal for most 10 Gigabit Ethernet environments.

10 Gigabit Performance Boosts Network Traffic

The ENW-9801 is an optimal solution to Ethernet applications by providing low-power budgets and small form factor. It offers simple integration into any PCI Express x4 server slot via one SFP+ slot. The onboard controller featured on the ENW-9801 integrates embedded technology and a 10GbE MAC into a single chip that offers up to 10Gbps of network throughput. PLANET Network solution greatly reduces the TCP/IP packet processing tasks of the server's CPU by performing enhanced data-handling algorithms, thereby providing nearly 10Gb line speed performance with the simplicity of a conventional Network Interface Card (NIC).

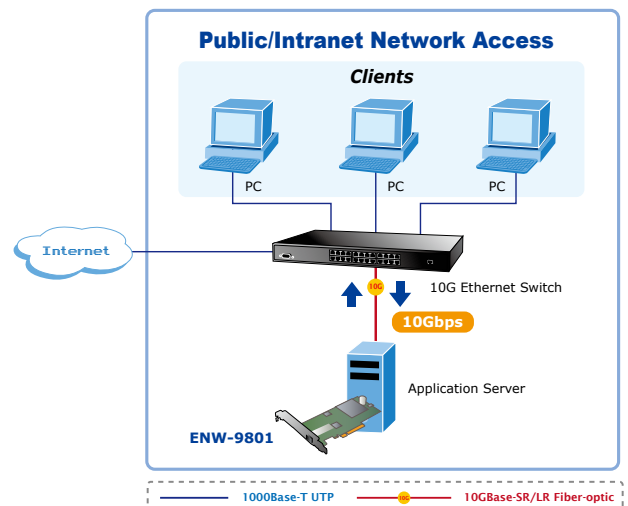
Applications

- Server NICs

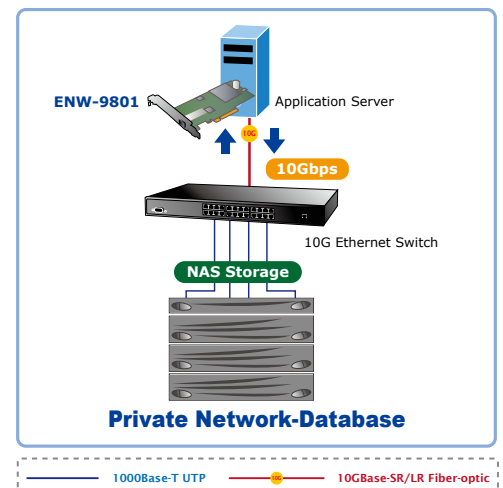
PLANET ENW-9801 is equipped with one 10 Gigabit SFP interface, giving ten times more performance than the existing Gigabit transmission. Thus, the ENW-9801 can easily act as a server NIC of your networks by wiring to the backbone switches. With one PCI Express rev. 2.0 specification x4 Interface, the ENW-9801 is an ideal solution to the mainboard with PCI Express interface now and in the future.

Product Features

- PCI Express rev. 2.0 specification x4 Interface
- IP, TCP, UDP checksum offloading
- IEEE 802.1Q VLAN ID Tagged / IEEE 802.1q Qos
- 16K Jumbo Frame Size
- IEEE 802.3x Full-Duplex Flow Control
- Complies with Microsoft and Linux Platform



Server Farm Application



Specifications

| | | |
|--------------------------------|---|---|
| Model | ENW-9801 10Gbps SFP+ PCI Express Server Adapter | |
| Hardware Specifications | | |
| Hardware Version | 2 | |
| Attachment Interface | PCI Express rev. 2.0 specification x4 Interface | |
| Media Interface | SFP+ Connector | |
| Optical Module Options | LRM, LR, SR | |
| Memory | 1Mbit internal memory | |
| Jumbo Frame | 9K / 16K Bytes | |
| LED Indicators | LNK / ACT per port | |
| Dimensions (W x D x H) | 62 x 83 x 22 mm | |
| Weight | 47g | |
| Typical Power Consumption | 4 watts | |
| Advanced Functions | | |
| Layer 2 Features | IEEE 802.3x Flow Control support IEEE 802.1Q VLAN support | |
| Operating System Support | Windows Server 2008R2 64bits Windows Server 2012 64bits Windows 7 32 / 64bits Windows 8 32 / 64bits Linux (2.6x to 3.8.0) VMware® ESX 4.x | |
| Standards Conformance | | |
| Regulation Compliance | FCC Part 15 Class B, CE | |
| Standards Compliance | IEEE 802.3ae IEEE 802.3x IEEE 802.1Q | 10Gbps Ethernet Flow Control and Back Pressure VLAN Tagging |
| Environment | | |
| Operating | Temperature: 0 ~ 50 degrees C Relative Humidity: 5 ~ 95% (non-condensing) | |
| Storage | Temperature: -10 ~ 85 degrees C Relative Humidity: 5 ~ 95% (non-condensing) | |
| Package | | |
| Package Contents | <ul style="list-style-type: none"> Ⓒ ENW-9801 Server Adapter Ⓒ Quick Installation Guide Ⓒ CD-ROM (Driver & User's Manual) Ⓒ Low Profile Bracket | |

Ordering Information

| | |
|----------|--|
| ENW-9801 | 10Gbps SFP+ PCI Express Server Adapter |
|----------|--|

Related Product

| | |
|------------|---|
| ENW-9803 | 10GBase-T PCI Express Server Adapter |
| XGSW-28040 | 24-Port 10/100/1000Mbps with 4-Port Shared SFP + 4-Port 10G SFP+ Managed Switch |
| WGSW-52040 | 48-Port 10/100/1000Mbps + 4-Port 1000X SFP + 4-Port 10G SFP+ Managed Switch |

Available Modules

| | |
|--------|--|
| MTB-SR | SFP+ Port 10GBase-SR mini-GBIC Module (Multi-mode / 850nm / max. 550m) |
| MTB-LR | SFP+ Port 10GBase-LR mini-GBIC module (Single mode / 1310nm / max. 10km) |

2015-07

Ein Vertriebsprodukt von:

VIDELCO Europe Limited – Professionelle Audio-, Video-, Medien-Technik
 Fon: +49 (0)2102 / 86 39-00 • Fax: +49 (0)2102 / 86 39-17 • info@videlco.eu • www.videlco.eu