

CAT5, CAT6 and CAT7 Twisted Pair cable extenders supporting HDCP encryption and HDMI 1.3a compliant signals.

**DVI-HDCP-TP-TX50, HDMI-TP-TX50,
DVI-HDCP-TP-RX50, HDMI-TP-RX50**

Highlight features

- Automatic cable equalizing
- Remote power with 3 modes:
local / remote-send / remote-receive

The Lightware DVI-HDCP-TP and HDMI-TP 50 series extenders can transmit HDMI or DVI-D signals over two CAT5, CAT6 or CAT7 cables. They fully support HDMI 1.3a signals with or without HDCP encryption. The DVIHDCP-TP series extenders feature screw-locking DVI connectors to ensure reliable operation in professional environments, instead of the easily unpluggable HDMI connectors while keeping the benefits of the HDMI1.3a interface.

Cross compatibility between all the devices in the product series is ensured thanks to Lightware's attentive design. Any transmitter can be paired with any receiver without restriction. With Lightware's hybrid modular matrix concept, it is even possible to connect an extender box directly to the matrix router using an MXHDMI-TP series input or output board (MX-HDMI-TP-IB or MX-HDMI-TP-OB). This integrated solution is invaluable for AV professionals and system integrators.

Power source can be set by jumper for local supply with plug-in adapter, or for remote supply through TP CATx cable. All devices can be mounted on rack shelf, or used standalone.

Supporting the latest HDMI1.3 standard, these products can be seamlessly connected to the latest BluRay players, set top boxes, AV receivers or even Apple TV.

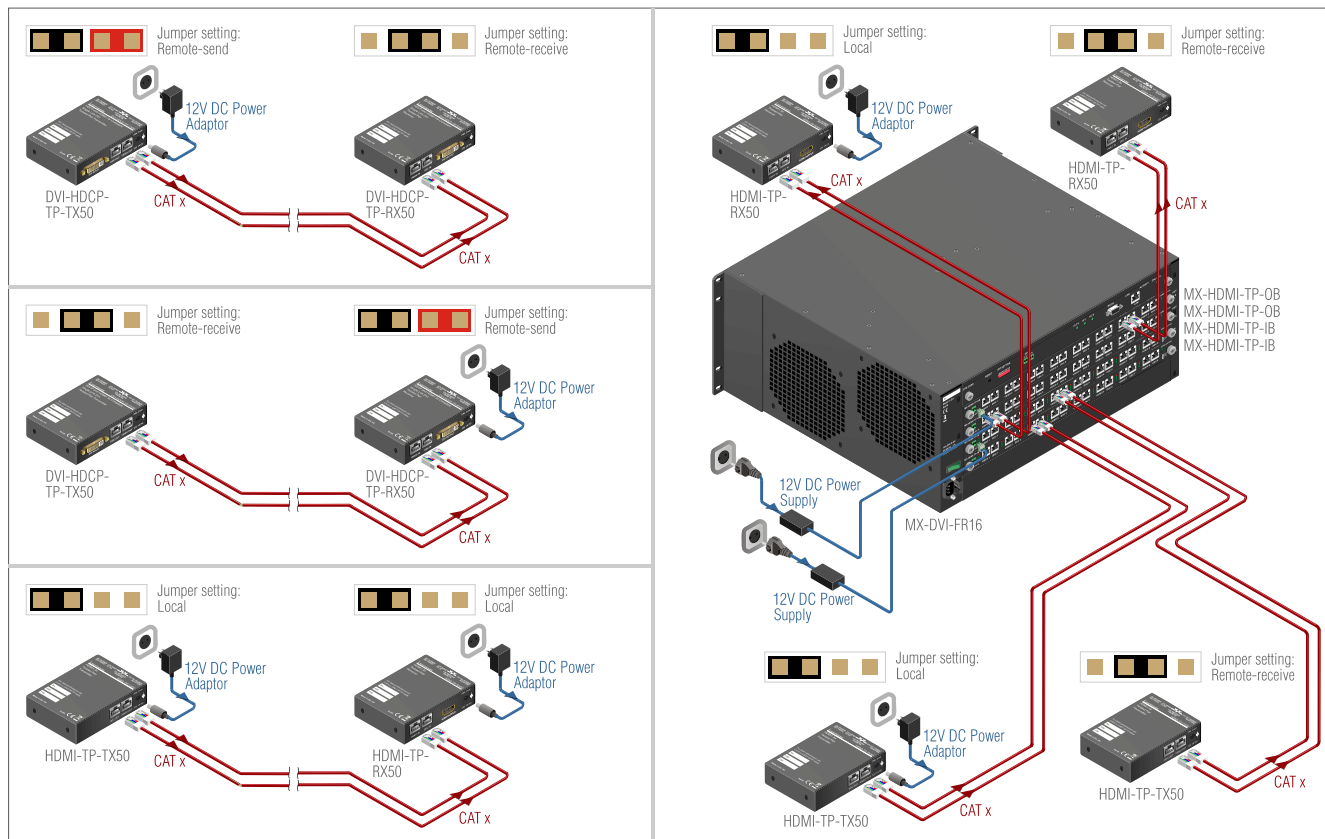
Inputs are equalized on all receivers, this way up to 65 meter long cable extension can be achieved with CAT7S/FTP cable on 1920x1080p@60Hz resolution. Accessible distances depend on the used cable quality and signal resolution.

Options

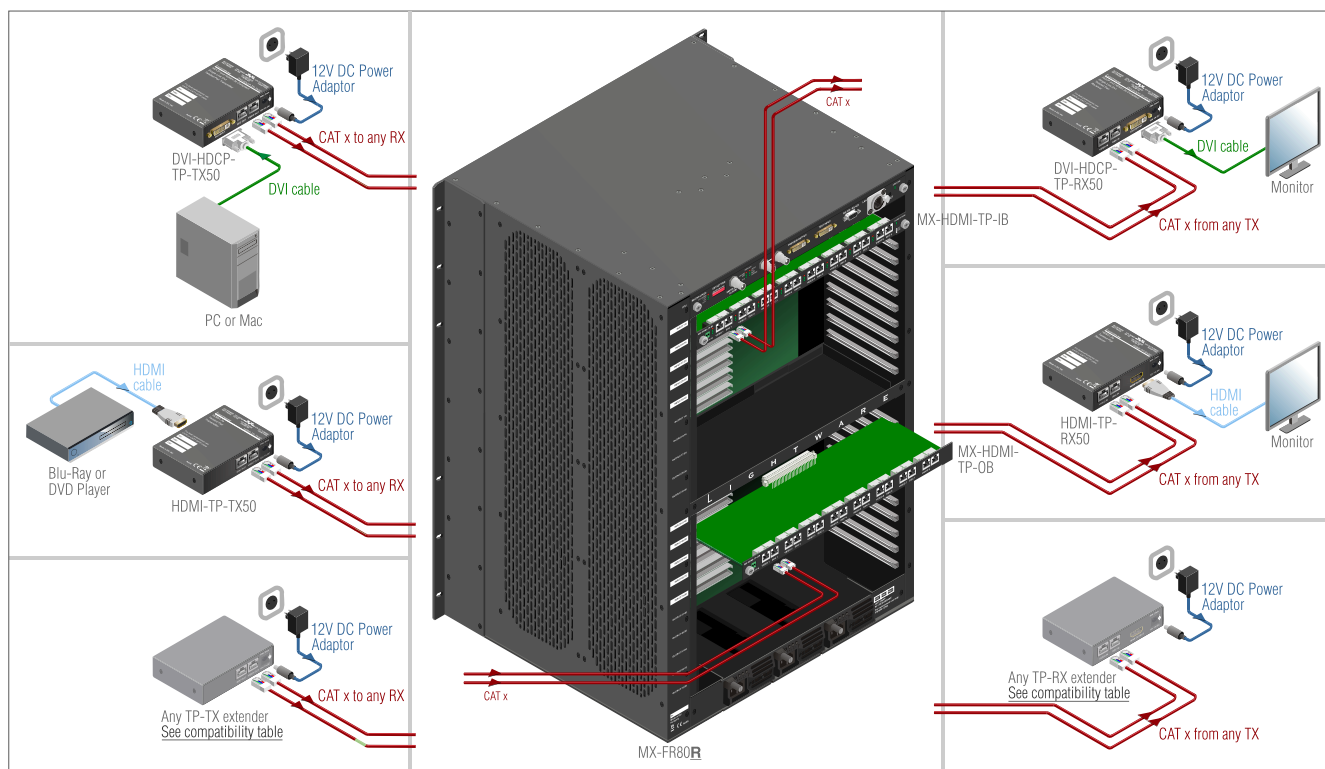
1U rack shelf



Remote Power Options



Typical Application



Applications

- Home theatre systems
- Multiroom video and audio control
- Professional AV systems, conference rooms
- Rental and Staging
- Digital signage

Features

- Extends HDMI1.3a, HDCP1.1 and DVI1.0 signals
- Supports Dolby TrueHD and DTS-HD Master Audio 7.1 formats
- 1920x1200 or 2048x1080 maximal resolutions
- Cross compatibility with any Lightware Twisted Pair device
- Jumper selectable local or remote power source
- Automatic adaptive cable equalization adjustment
- Metal housing for professional use and rack mounting

Connectors

Power:	locking DC connector (2.1 / 5.5 mm)
TX input, RX output:	HDMI or 29 pin DVI-I connectors (only digital pins are connected)
TX output, RX input:	Dual RJ45

Specifications

Data rate:	2.25 Gbps per color
Resolution:	640x480 to 1920x1200 or 2048x1080 deep color
HDCP pass through:	yes
EDID memory:	no
EDID emulation:	none (transparent)
TP cable equalization:	0-40dB automatic
Front panel control:	none
LED indicators:	power
RS-232 pass through:	no
Power supply:	External power adaptor (100 to 240 V AC, 50/60Hz), (12V DC, 1A)
Power consumption:	2 Watts
Dimensions:	98W x 67D x 25H mm
Net weight:	230 gramms/product
Compliance:	CE, UL, FCC
Warranty:	3 years

Compatibility table

- http://www.lightware.eu/pdfs/tp_extenders_cross_comp.pdf

Maximum extension distances

Resolution	TMDS Freq	CAT5eUTP	CAT5eFTP	CAT6UTP	CAT6FTP	CAT6S/FTP	CAT7S/FTP
640x480	25,2 MHz	60m	60m	65m	75m	80m	85m
800x600	40,0 MHz	60m	60m	60m	65m	70m	75m
1024x768	65,0 MHz	55m	55m	60m	65m	70m	75m
1280x720p	74,4 MHz	55m	55m	60m	65m	65m	75m
1280x1024	108,2 MHz	50m	50m	55m	65m	65m	70m
1400x1050	122,1 MHz	45m	45m	50m	65m	65m	70m
1600x1200	162,4 MHz	30m	35m	40m	45m	50m	55m
1920x1200	153,4 MHz	30m	35m	45m	55m	60m	65m
1920x1080i	74,4 MHz	50m	55m	55m	65m	65m	75m
1920x1080p	149,1 MHz	30m	35m	45m	55m	60m	65m
1920x1080p 30 bit	186,3 MHz	20m	20m	25m	25m	30m	35m
1920x1080p 36 bit	223,6 MHz	10m	10m	10m	15m	15m	20m

Transmitters and receivers front and back view



DVI-HDCP-TP-TX50



DVI-HDCP-TP-RX50

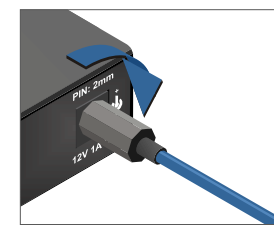
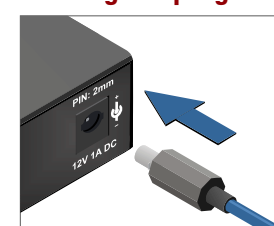


HDMI-TP-TX50



HDMI-TP-RX50

Locking DC plug



Twist 90° clockwise to lock