

> Getting started with MediaStar 780 QuickPlay Digital Media Decoder

What's in the box

- 780 unit
- AC power cord
- HDMI to HDMI cable



The MediaStar 780 QuickPlay decoder is a simple-to-use digital signage player. It connects to a display via HDMI or Component Video (YPbPr) and plays digital media files that have been uploaded from a USB memory key.

The unit will play a wide variety of video and still image files that are prepared using the QuickPlay File Converter software, included with the starter pack. PowerPoint 2010 presentations can be saved as .WMV files and input to QuickPlay File Converter.

Using the QuickPlay File Converter software, video and image files are sorted into the preferred playback order, then converted and copied onto a USB memory key. Simply insert the memory key into the QuickPlay unit and it automatically uploads the files and plays them out.

For future expansion, the units can be upgraded with a simple 'Enablement Code' to support full MediaStar Evolution system functionality as your digital signage requirements grow to a fully networked digital media delivery system.

Important Safety Instructions

1. Read these instructions.
2. Keep these instructions.
3. Heed all warnings.
4. Follow all instructions.
5. Do not use this apparatus near water.
6. Clean only with a dry cloth.
7. Do not block any ventilation openings. Install in accordance with the manufacturer's instructions.
8. Do not install near any heat sources such as radiators, heat registers, stoves or other apparatus (including amplifiers) that produce heat.
9. Do not defeat the safety purpose of the polarised or grounding-type plug. A polarised plug has two blades with one wider than the other. A grounding type plug has two blades and a third grounding prong. The wide blade or the third prong are provided for your safety. If the provided plug does not fit into your outlet, consult an electrician for replacement of the obsolete outlet.

10. Protect the power cord from being walked on or pinched particularly at plugs, convenience receptacles, and the point where they exit from the apparatus.

11. Only use attachments/accessories specified by the manufacturer.

12. Use only with the cart, stand tripod, bracket, or table specified by the manufacturer, or sold with the apparatus. When a cart is used, use caution when moving the cart/apparatus combination to avoid injury from tip-over.



13. Unplug this apparatus during lightning storms or when unused for long periods of time.

14. Refer all servicing to qualified service personnel. Servicing is required when the apparatus has been damaged in any way, such as power-supply cord or plug is damaged, liquid has been spilled or objects have fallen into the apparatus, the apparatus has been exposed to rain or moisture, does not operate normally, or has been dropped.

Warning: There are no user serviceable parts within the MediaStar 780-QP Unit.

Installation

When locating the 780 unit, ensure that a clearance distance of 25mm (1") is maintained around it to preserve the ventilation airflow. Items that could accidentally block the ventilation grills or impede the cooling airflow must not be located near the unit.

The 780 must not be installed where there is a possibility of exposure to condensation, dripping or splashing liquids. Containers filled with fluid should not be located in the vicinity of this unit.

Connect the 780 unit to the display using the HDMI cable or the YPbPr phonos and analogue stereo audio jack socket. When using HDMI, the 780 will automatically negotiate the highest screen resolution both units support. The YPbPr video output is available simultaneously with the same output resolution. If the YPbPr video outputs are used without HDMI, the output video resolution is set to 720p.

The 780 unit can be powered using an external mains/DC power supply, or units ordered with the Power over Ethernet (PoE) option (denoted with a part number ending with - PoE) can also be powered with an 802.3af compliant PoE system.

Please note: The Composite video output and IP network connectivity is not supported in a 780 QuickPlay unit.

Powering with an external mains/DC power supply

The external mains/DC power supply input rating must meet the specifications of the mains supply at the installation location. Only the LPS (Limited Power Source) power supply provided with this equipment should be used.

This device must be installed using a mains (AC supply) plug and socket that is located near the equipment, that remains operable and be easily accessible to disconnect the unit in the case of an emergency.

Insert the DC jack plug of the mains/DC power supply unit into the jack socket on the 780 unit. Plug in the mains/DC power supply unit, switch on and check that the indicator LED on the connector edge of the unit is lit.

Powering as a 802.3af PoE Powered Device (PD)

On the PoE equipped network system, power to the 780 unit can be supplied via the CAT5/6/6e/7 cable. The 780 unit will automatically negotiate with the power supply equipment and power up when the cable is inserted in the 780's RJ45 socket. A blue LED (on the side of the unit close to the RJ45 socket) will be illuminated to indicate PoE is operational.

The operation of the 780 is then identical to that when an external DC power supply is used. If a DC power supply is connected at the same time as PoE is in use, the 780 will take most power from the local DC supply, but will maintain the PoE power supply.

Booting Up

Once powered, the LED indicator close to the phono connector will initially be orange. After approximately 15 seconds, the video outputs will become active and then show an initialising screen. During the boot sequence the screen may go blank for a few seconds, then return to showing the initialising screen. When booting is complete (typically 90 seconds after power up) the indicator LED will turn green and the INFO menu will be shown on screen. When this menu clears, the 780 is fully booted. On initial installation a QuickPlay video will be shown on the display.

Infra Red Remote Control

The 780 configuration menus can be setup using the MediaStar Infra-Red Remote Control Unit included in the starter pack (or order separately - 791/3W) . Ensure the RCU is at least 1 metre (3ft) away from the IR receiver for reliable operation. Pressing any key on the RCU will cause the green indicator LED to flash off then on again to verify IR reception. If this does not occur, check the RCU batteries and ensure no other IR 'emitters' are in view of the IR receiver (this will corrupt the IR signals from the RCU).

Please note that on-screen menus take a short time to update. Repeated key presses are stored and may lead to menu selection difficulties.

When moving around on-screen menus, use the up/down arrows to jump between fields, and the +/- arrows select different field settings.

QuickPlay Manual

Configuration Menus

Info Screen

Press the INFO button on the RCU to show on-screen information about the 780 unit. This includes the content reference name that was set when the media was created in the File Converter software. This helps you easily confirm you are running the desired media file set. Other RCU buttons, except the INFO button, will not function while the info screen is present.

Menu Screen

Pressing the MENU button brings up the setup menus. To select these use the UP/DOWN and OK buttons.

Save & Exit

When you have made a change to any setup item, select this button and press OK to save and action the change. If the menus time-out or if you exit by pressing the QUIT key, any changes you have made will be discarded.

Date/Time

Use this menu to set the date and time on the unit. This must be set if you want to use timed display on/off switching using HDMI CEC controls.

On/Off Control

Check the box by each day if you want to switch the display on/off on that day, then enter the appropriate on/off time. If you wish to leave the screen on overnight, do not enter an off time on that day. If the screen is already on from a previous day, you can leave the on time blank.

Display on/off switching is implemented using CEC commands sent over the HDMI cable, where this is supported and enabled on your display (note: some displays support switching off only!). When switching off, the 780 will shut down its video signals on both the HDMI and YPbPr outputs so non CEC displays may sense this and go into standby anyway. Please note though, when some displays are in standby, they will not automatically power up again when the 780 switches its video signals back on.

A display can also be manually switched on and off using the QUIT button on the 780's remote control unit.

Event Log

This shows information about the operation of the unit. Details of any errors are shown here.

Media Files

This menu lists the individual media files that are currently stored in the Quickplay unit's flash memory.

Change Password

Set or clear a six digit numeric unit password in this menu. Once set, certain on-screen setup menus will prompt for a password before allowing user access, and the password will have to be entered before new video content can be loaded from a USB memory key.

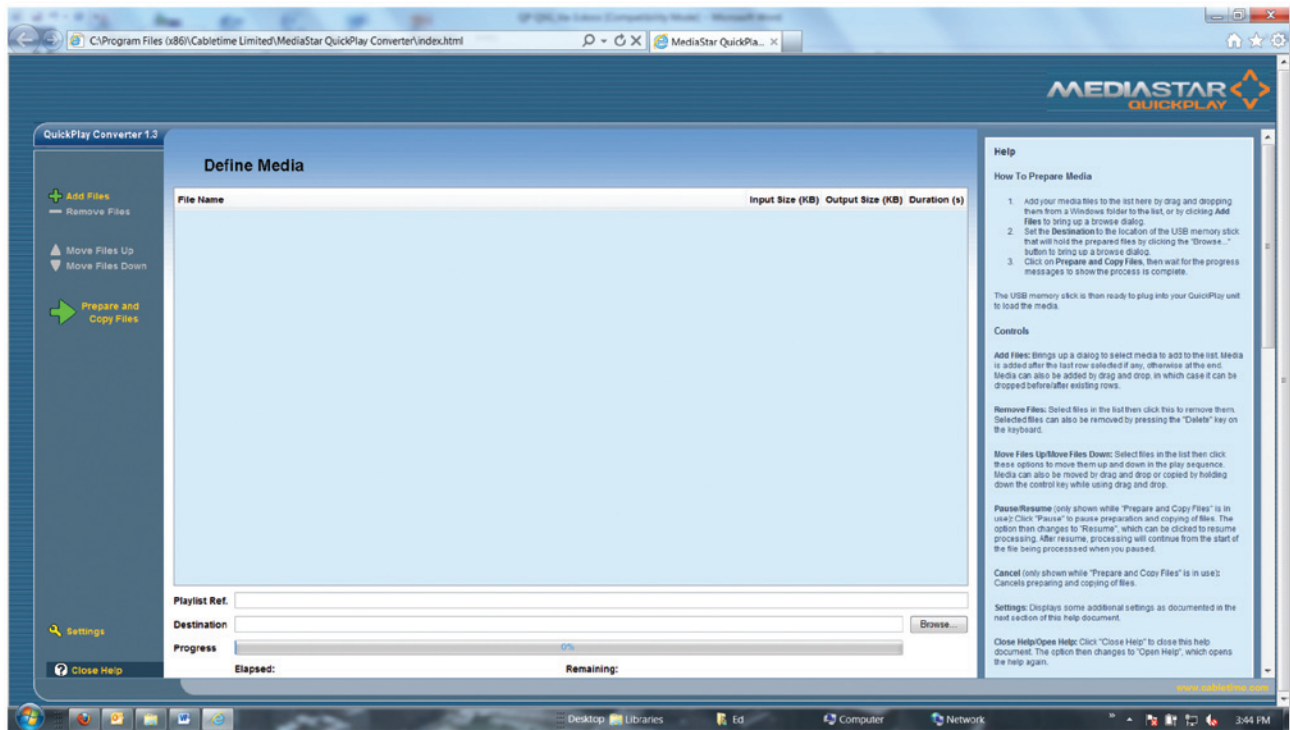
If a password is lost, inform Cabletime of the unit's serial number and provide proof of ownership then we will provide an enablement code to clear the lost password.

Enablement Code

Use this menu to enter a 15 digit enablement code into the unit. This will clear any lost password or upgrade the unit to full MediaStar Evolution functionality (an additional charge is required for this).

QuickPlay Convertor Software

The QuickPlay Converter Software is a graphical user interface program that is used to prepare the video, audio and still image files to be played on the QuickPlay unit. The types of files permitted are listed below and programming instructions are clearly defined in the Help section of the QuickPlay Converter Software's main page. Once prepared, the files will be transferred over to a USB memory stick which will then be inserted into the QuickPlay unit.



USB Memory Stick

Once the USB memory stick has loaded the content files into the QuickPlay unit it should be removed. The memory stick can then be used for other QuickPlay units or put aside to use again when changing the files in the QuickPlay is desired.

Quick Start Guide

Product Specification

Feature	780 support
Physical	165 x 95 x 31mm, 220g 6.5" x 3.8" x 1.3", 7.8 oz
Ambient operating temperature range	-5° - 45°C, 23 - 113°F
Power	5VDC, 8W, 10W for power over Ethernet variant
Power Supply Input	100-240VAC, 47-63Hz Output: +5VDC (+/- 5%), 2.0 - 3.5 Amps, with a DC jack plug (center positive voltage, 2.5/5.5mm)
LAN	IP Comms not supported, Auto MDIX, power over ethernet powered device (PD) for PoE variants
HDMI, YPbPr	480i, 480p, 576i, 576p, 720p50/60Hz, 1080i50/60 (25, 30 frames per second)
HDMI Stereo	Single channel stereo digital audio
Analog Audio Stereo	(2.2V pk-pk into a 10K Ohm load)
File Formats Supported (via File Converter software)	Video: Audio Video Interleave (avi), MPEG (mpg, mpeg, mod, m2t, m2ts, mts, dat, vro, vob), Video CD (dat), Windows Media (wma, wmv, asf), MPEG4 (mp4, m4v), Mobile Video (3gp, 3g2, 3gpp, 3gp2), QuickTime (mov, qt), DVD Video (ifo), FLV (flv), Matroska Video (mkv) Audio: MP3 (mp3, mp2, mpa), OGG (ogg), WAV (wav), AAC (aac), FLAC (flac), Monkey's Audio (ape) Still Images: bmp, gif, ico, jpg, jpeg, png, tif, tiff
USB	1 x USB 2.0 high speed Host
USB Device Support	Memory Stick (for software and Media upgrades only)
Integrated IR Receiver	Yes
External IR Receiver	911-4141 Order separately
Infra-Red Remote Control Unit	791/3W Order separately
Internal Storage	4GB (8, 16, 32, 64GB options)
Video Decoder	SD/HD MPEG2, MPEG4-10(H264 AVC)
Audio Decoder	MPEG1 part2, AAC-LC, AC3 Dolby Digital Plus
Date/Time Retention	5 days with power off
Temperature Monitoring	Operating temperature available via on-screen menu
Monitor On/Off	HDMI CEC and video blanking (no signal output) on all outputs

> Regulatory Requirement Notices

EUROPE



Cabletime Limited declare that the products described in this manual conform to the requirements of the following Directives:

- 2004/108/EC EMC Directive
- 2006/95/EC Low Voltage Directive

THE STANDARDS APPLIED ARE:

EN55022:2006	Information technology equipment. Radio disturbance characteristics
EN61000-3-2:2006	Electromagnetic compatibility (EMC). Limits for harmonic current emissions
EN61000-3-3:2008	Electromagnetic compatibility (EMC). Limits. Limitations of voltage changes, voltage fluctuations and flicker
EN61000-6-1:2001	Electromagnetic compatibility (EMC) Part 6-1 Immunity
EN60950-1:2006 + A11:2009	Information technology equipment. Safety General requirements
IEC60950-1:2005	Specification for safety of information technology equipment, including electrical business equipment, with CB variations for US, Canada, Japan, and Australia

UNITED STATES OF AMERICA

Cabletime Limited declare this equipment has been tested and found to comply with the limits for a Class A digital device, pursuant to Part 15 of the FCC Rules Subpart B (15.107, 15.109). These limits are designed to provide reasonable protection against harmful interference when the equipment is operated in a commercial environment. This equipment generates, uses, and can radiate radio frequency energy and, if not installed and used in accordance with the instruction manual, may cause harmful interference to radio communications. Operation of this equipment in a residential area is likely to cause harmful interference in which case the user will be required to correct the interference at his own expense.

- This device complies with part 15 of the FCC Rules.

Operation is subject to the following conditions:

- This device may not cause harmful interference, and
- This device must accept any interference received, including interference that may cause undesired operation.

Whilst all reasonable care has been taken to ensure the accuracy of this publication, the publishers and authors cannot accept responsibility for any errors and omissions. Cabletime Limited reserves the right to revise this publication and to make changes in the content from time to time without notice.

Copyright © Cabletime 2011. All rights reserved. No part of this guide may be reproduced, stored in a retrieval system or transmitted in any form or by any means (electronic, mechanical, photocopying, recording or otherwise) without prior written permission of Cabletime Ltd.

> USA Office

Cabletime USA, 400 Valley Road, Mt Arlington, New Jersey, NJ 07856
T: 973 770 8071 E: quickplay@cabletime.com www.cabletime.com

UK Office

Cabletime UK T: +44 1635 35111 E: sales@cabletime.com

Asia Office

Cabletime ASIA T: +852 3101 2650 E: asia@cabletime.com