

# 1T-C2-750

## Dual DVI Scaler PLUS (x)

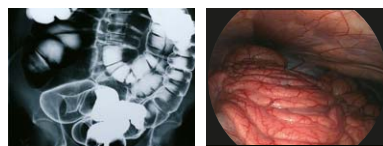


### Key Features 1T-C2-750

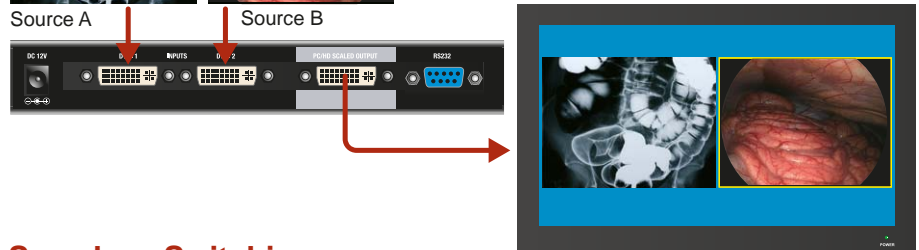
- Dual scalers
- 2x DVI-I Inputs
- User loadable images
- DVI-D I/O support 1920x1200 60Hz
- DVI-A in/output support 2048x2048
- Analog supports RGBHV, RGBS, RGsB & YPbPr
- HDTV Resolutions to 1080p / 60
- Control via RS-232, IR or Front Panel
- Windows Control Panel
- Variable zoom to 10X & shrink to 10%
- Per-pixel or percentage scaling
- Full picture-in-picture (PIP)
- Seamless Switching
- Autoset - Auto analog picture sizing
- Chromakey and Lumakey
- Genlock, Mix and PIP
- Locking DC Power adaptor
- Optional IR Remote Control Unit
- Optional Single/Dual Rackmount Kit

The **1T-C2-750** includes two high-quality graphic scalers capable of working at full DVI video rates. It can process digital DVI-D and analog DVI-A signals including RGBHV, RGBS, RGsB and YPbPr formats, using the two DVI-I inputs and one DVI-I output available. Each of these inputs can be scaled and/or converted to any of the accommodated formats if required and HDMI signals (with or without HDCP) are also accommodated using adaptors. As well as scaling and conversion, the unit is fully equipped to provide dual picture-in-picture windowing, seamless switching, keying and overlaying, 10 editable presets and Flash memory for the storage of 10 user loadable images such as custom logos and testcards.

### Dual Picture-in-Picture

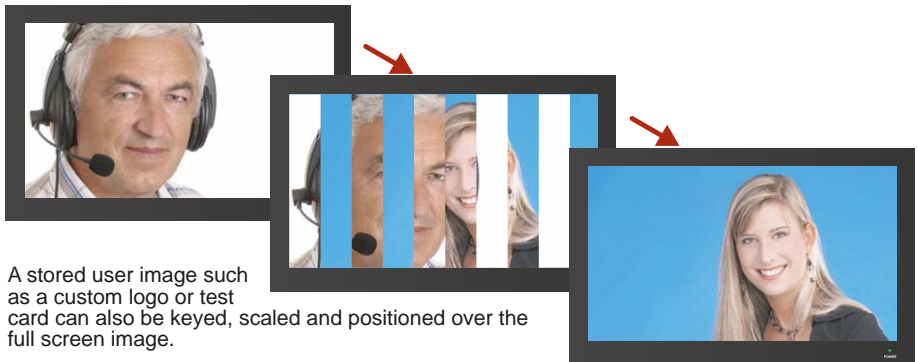


The 1T-C2-750 can be used as a Dual Picture-in-Picture device as shown. In this example Source A and B are re-sized and positioned side by side over a color background. Source B has also been given a color border.



### Seamless Switching

The 1T-C2-750 can be used as a Seamless Switcher between two full screen images. Transition from one input to the other is by either fade, cut or curtain wipe.



A stored user image such as a custom logo or test card can also be keyed, scaled and positioned over the full screen image.

### Editable Preset examples



1. Dual PIP

2. Layered PIPs + borders

3. Coloured background

4. Transparency

5. Stored user image (ie keyed logo)

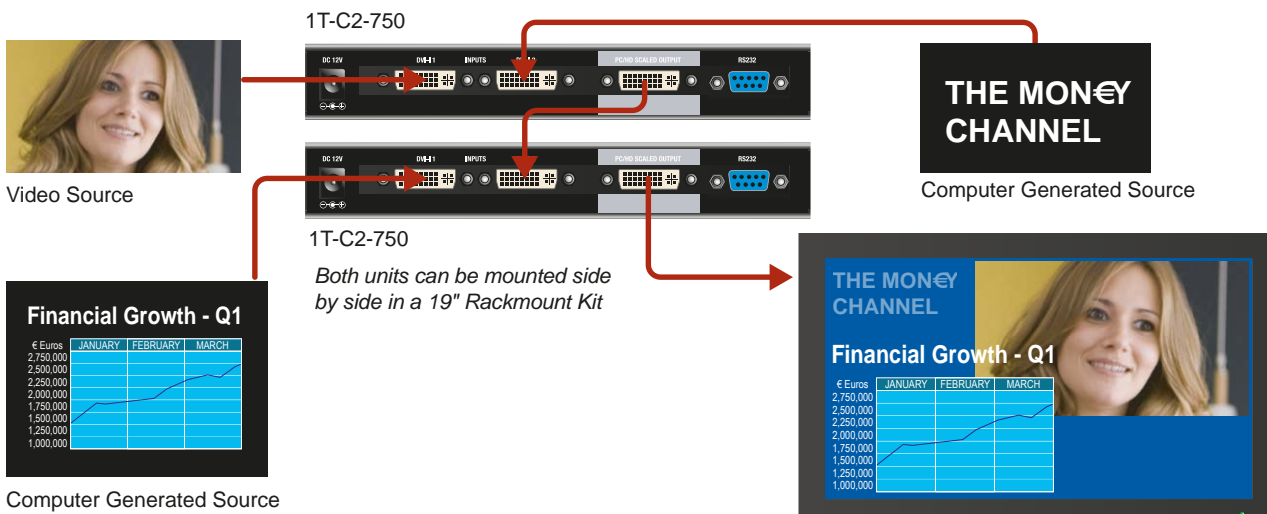
## Video Switcher/Scalers

Distributor / Vertrieb:

**VIDELCO** – Professionelle Audio- Video- Medien-Technik!  
Tel.: +49 (0)2102 / 86 39-00 • Fax: +49 (0)2102 / 86 39-17 • info@videlco.eu • www.videlco.eu

## Cascading 2 or more units

Several 1T-C2-750 units can be cascaded resulting in additional picture-in-picture graphics, logos, testcards and keyed images onto one screen. For example a combination of two units can provide three scaled and positioned images from three separate sources over a color background.



**AV**  
WINNER  
1T-C2-750  
AV Awards  
2009  
Systems  
Product of  
the year

## 1T-C2-750 Specifications

### Video Inputs

Signal Type	2x DVI-I via DVI-I Connector
Digital DVI-D Resolutions	PC to 1920x1200, HD to 1080p/60
Analog DVI-A	RGBHV, RGBS, RGsB, YPbPr
Sync	TTL Level, 10KΩ, Pos or Neg
Termination	75Ω
R-G-B Level Range	0.5-2.0 Vp-p
Scan Rate Detection	Automatic
PC Resolutions	Any up to 2048x2048
HDTV Resolutions	Any up to 1080p/60
Max Horiz Scan Rate	150KHz
Computer Compatibility	PC, Macintosh, Workstations

### Computer Outputs

Signal Type	1x DVI-I via DVI-I Connector
Format	RGBHV, RGBS, RGsB, YPbPr
R-G-B Level	0.7 Vp-p
Analog Signals	PC to 2048x2048, HD to 1080p/60
DVI Signals	PC to 1920x1200, HD to 1080p/60
Vertical Refresh Rate	Any to 250Hz

### Compliance

HDCP	Version 1.2
------	-------------

### General

Size and Position	Automatic via AutoSet or Manual
Image Size	User-Definable Presets
Image Freeze	One Video Frame
Settings Memory	Non-Volatile
Zoom Range	Variable to 10X Zoom
Shrink Range	Variable to 10%
Image Mirroring	Horizontal and/or Vertical
Horizontal Filtering	Full Digital
Conversion Technology	Proprietary – CORIO®2
Frame Rate Conversion	Frame add/drop
Color Resolution	24-bit (16.8 Million Colors)

Sampling Rate	162MHz
Digital Sampling	24-bit, 4:4:4 format
Firmware Memory	Flash, Upgradeable via RS-232
Analog Video Adjustments	R-G-B Levels Contrast, Phase

### Audio support

Embed / De-Embed	HDMI (via DVI)
------------------	----------------

### Control Methods

Local	via Front Panel Buttons & OSD
RS-232 Interface	via D9 Female Connector
Infrared Remote	via IRC-5 Remote Unit

### Warranty

Limited Warranty	5 Years Parts and Labor
------------------	-------------------------

### Regulatory Compliance

Main Units	FCC, CE, RoHS
Power Supplies	UL, CUL, CE, PSE, GS, RoHS

### Mechanical

Size (H-W-D)	30x200x90mm (1.18"x7.87"x3.54")
Weight (Net)	0.52 kg (1.14 lbs)

### Environmental

Operating Temperature	0° to +50° C (+32° to +122° F)
Operating Humidity	10% to 85%, Non-condensing
Storage Temperature	-10° to +70° C (+14° to +158° F)
Storage Humidity	10% to 85%, Non-condensing

### Power Requirement

External Power Supply	12VDC@1A
-----------------------	----------

### Accessories Included

1x Operations Manual	1T-C2-750
1x Power Adapter	US, UK, Euro or Australia

### Product Item Numbers

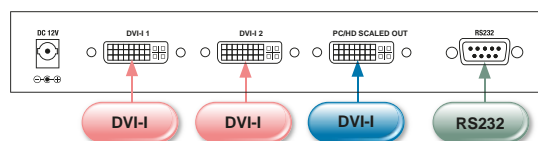
1T-C2-750	Dual-PIP DVI-I Switcher/Scaler
-----------	--------------------------------

### Optional Accessories

IRC-5	Infrared Remote Control
RM-230	Single/Dual Rackmount Kit
ZDH-2038	DVI Male to 5-BNC Female
ZDH-2040	DVI Male to VGA Female



1T-C2-750



Distributor / Vertrieb:

**VIDELCO** – Professionelle Audio- Video- Medien-Technik!

Tel.: +49 (0)2102 / 86 39-00 • Fax: +49 (0)2102 / 86 39-17 • info@videlco.eu • www.videlco.eu

