

## CAT5, CAT6 and CAT7 Active Twisted Pair Wall Plate Extenders



### Highlight features

- Automatic cable equalizing
- RS-232 pass-through
- Supports Dolby TrueHD and DTS-HD Master Audio 7.1 formats on Outputs with MX-HDMI-TP-OB board
- Solid, one piece aluminum panel in two colors: silver and black
- Aesthetic mounting with hidden screws

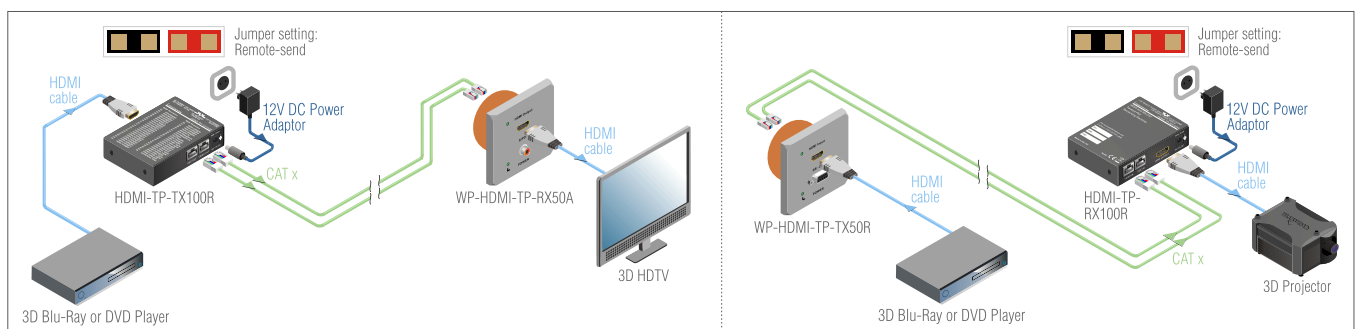
The Lightware WP-DVI-HDCP-TP and WP-HDMI-TP 50 series extenders can transmit HDMI or DVI-D signals over two CAT5, CAT6 or CAT7 cables. They fully support HDMI 1.3a signals with or without HDCP encryption. The DVI HDCP-TP series extenders feature screw-locking DVI connectors, while keeping all the features of HDMI 1.3a, including embedded audio. This also ensures reliable operation in professional environments when compared to easily unpluggable HDMI connectors.

The extenders can work with any Lightware Twisted Pair TX / Output board that is able to send power to the Wall Plate.

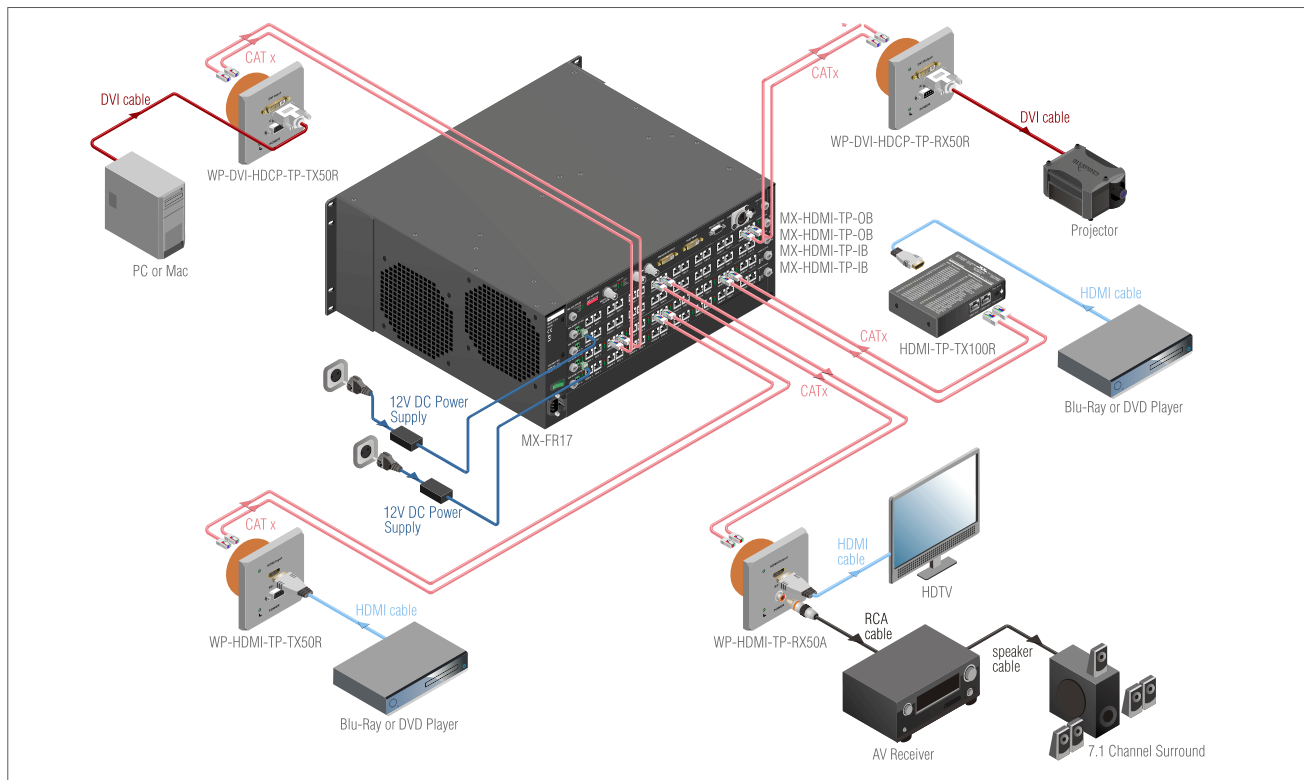
Supporting the latest HDMI 1.3 standard and 3D HDMI signals, these products can be seamlessly connected to the latest BluRay players, set top boxes, AV receivers and even Apple TV.

Inputs are equalized on all receivers, allowing for up to 65 m long cable extension to be achieved with CAT7S/FTP cable on 1920 x 1080p @ 60 Hz resolution. Accessible distances depend on the used cable quality and signal resolution.

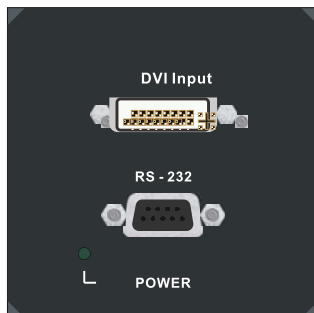
### Stand alone operation



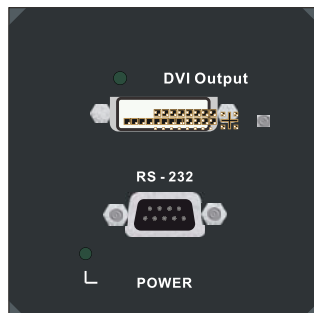
## Integrated system operation



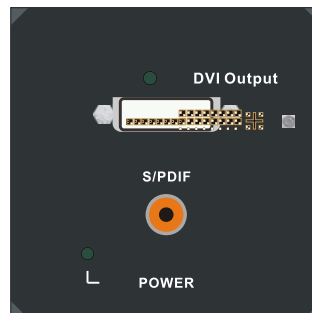
## Transmitter and receiver front view



WP-DVI-HDCP-TP-TX50R



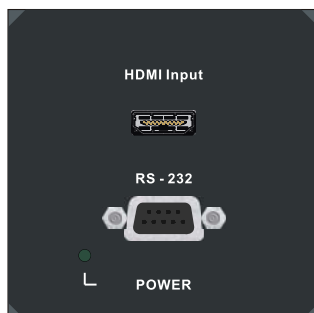
WP-DVI-HDCP-TP-RX50R



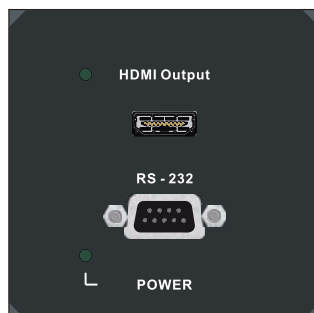
WP-DVI-HDCP-TP-RX50A



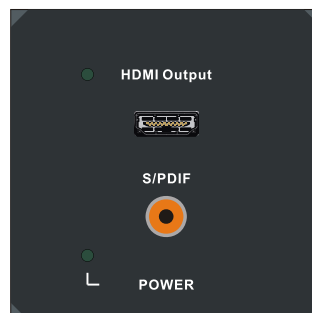
Wall Plate side view



WP-HDMI-TP-TX50R



WP-HDMI-TP-RX50R



WP-HDMI-TP-RX50A



Wall plate rear view

## Compatible products:

- Transmitters:
- DVI-HDCP-TP-TX50
- DVI-HDCP-TP-TX100R
- HDMI-TP-TX50

- HDMI-TP-TX100R
- HDMI-TP-TX200R
- MX-HDMI-TP-OB
- MXD-HDMI-TP-OB

- Receivers:
- DVI-HDCP-TP-RX50
- DVI-HDCP-TP-RX100R
- HDMI-TP-RX50

- HDMI-TP-RX100R
- HDMI-TP-RX200R
- MX-HDMI-TP-IB
- MXD-HDMI-TP-IB

## Applications

- Home theatre systems
- Executive boardrooms
- Multiroom video and audio control

## Features

- Extends 3D HDMI, HDCP 1.1 and DVI 1.0 signals
- Supports Dolby TrueHD and DTS-HD Master Audio 7.1 formats
- 1920 x 1200 or 2048 x 1080 maximal resolutions (3D)
- Cross compatibility with any Lightware Twisted Pair device (if the device can send power)
- Automatic adaptive cable equalization adjustment

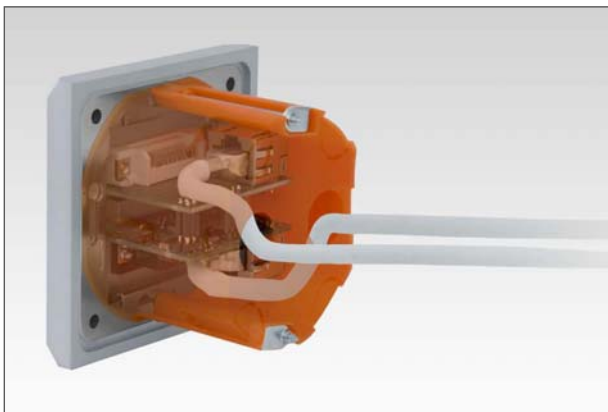
## Connectors

Video:	HDMI or 29 pin DVI-I connectors (only digital pins are connected)
Twisted pair connectors:	2 x RJ45
RS-232:	Dsub-9
Digital S/PDIF audio:	RCA

## Specifications

Data rate:	2.25 Gbps per color
Resolution:	640x480 to 1920x1200 or 2048x1080 deep color (3D)
HDCP pass through:	yes
EDID memory:	pass through
EDID emulation:	none (transparent)
TP cable equalization:	0-40dB automatic
Front panel control:	none
LED indicators:	power, signal detect on RX device
RS-232 pass through:	yes
TP cable equalization:	0-40dB automatic
Power:	12 V, powered from remote device through TP cables
Power consumption (TX):	1 W
Power consumption (RX):	1.5 W
Dimensions:	79 W x 9 D x 79 H mm
Net weight:	145 gramms / product
Compliance:	CE
Warranty:	3 years

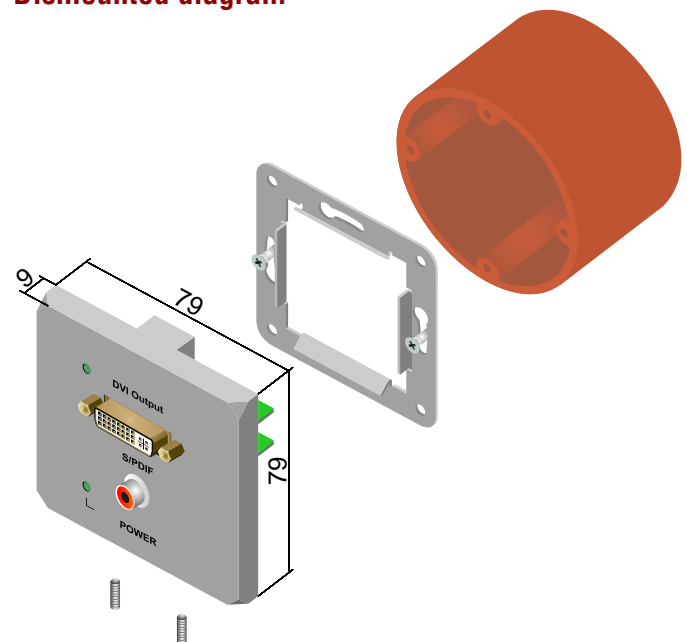
## Rear view with CAT cables



## Mounted in wooden panel



## Dismounted diagram



Dimensions shown in millimeters.

## Maximum extension distances

Resolution	TMDS Freq	CAT5e UTP	CAT5e FTP	CAT6 UTP	CAT6 FTP	CAT6 S/FTP	CAT7 S/FTP
640 x 480	25,2 MHz	60 m	60 m	70 m	70 m	80 m	80 m
800 x 600	40,0 MHz	60 m	60 m	65 m	65 m	75 m	75 m
1024 x 768	65,0 MHz	50 m	50 m	60 m	65 m	75 m	75 m
1280 x 720p	74,4 MHz	45 m	50 m	60 m	60 m	75 m	75 m
1920 x 1080i	74,4 MHz	45 m	50 m	60 m	60 m	75 m	75 m
1280 x 1024	108,2 MHz	30 m	40 m	55 m	60 m	65 m	65 m
1400 x 1050	122,1 MHz	20 m	30 m	50 m	60 m	65 m	65 m
1920 x 1080p	149,1 MHz	NR	NR	40 m	50 m	55 m	55 m
1920 x 1200	153,4 MHz	NR	NR	40 m	50 m	55 m	55 m
1600 x 1200	162,4 MHz	NR	NR	35 m	40 m	50 m	50 m
1920 x 1080p 30 bit	186,3 MHz	NR	NR	NR	NR	25 m	35 m
1920 x 1080p 36 bit	223,6 MHz	NR	NR	NR	NR	10 m	15 m

NR: Not recommended